





Board of shirt
draping

Alternative button closures



Sketches



Front Side and Back View



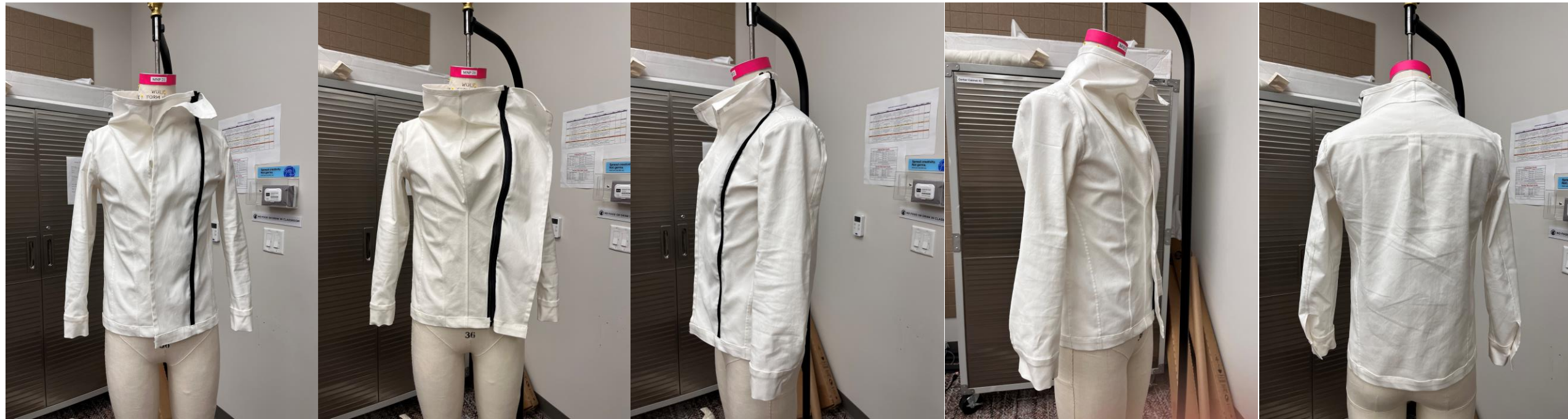
Photoshoot



Right Side

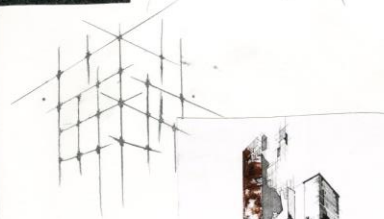
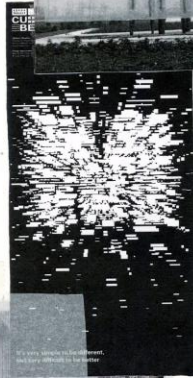
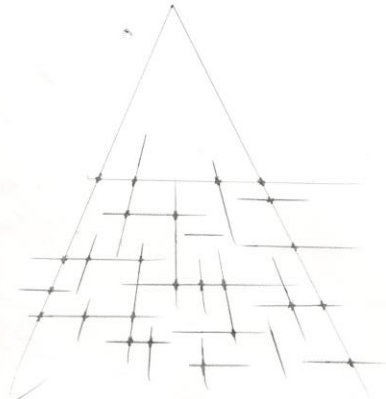
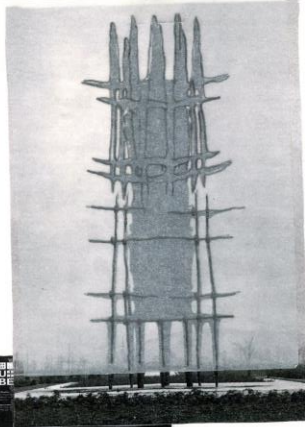


Wrong Side



Print Process

by Janecz
Bajzka
1955
s.pomenik
Internic.com



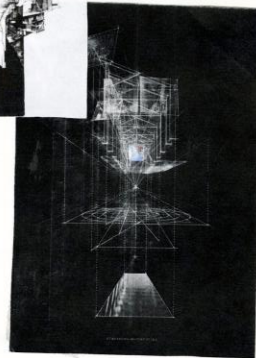
'Brainbarns'
by Kyle Henderson



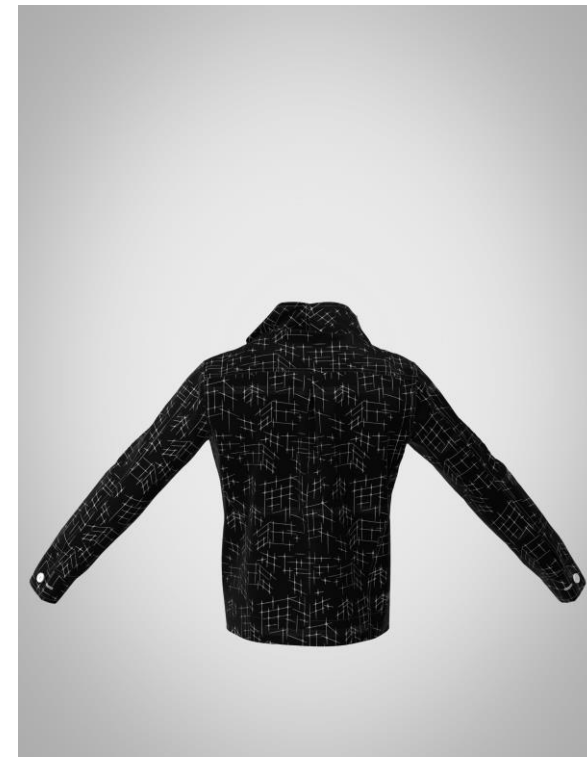
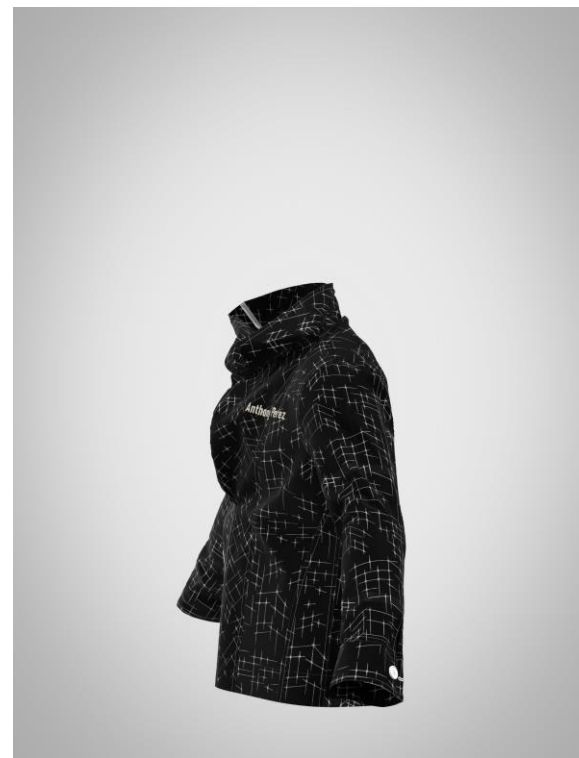
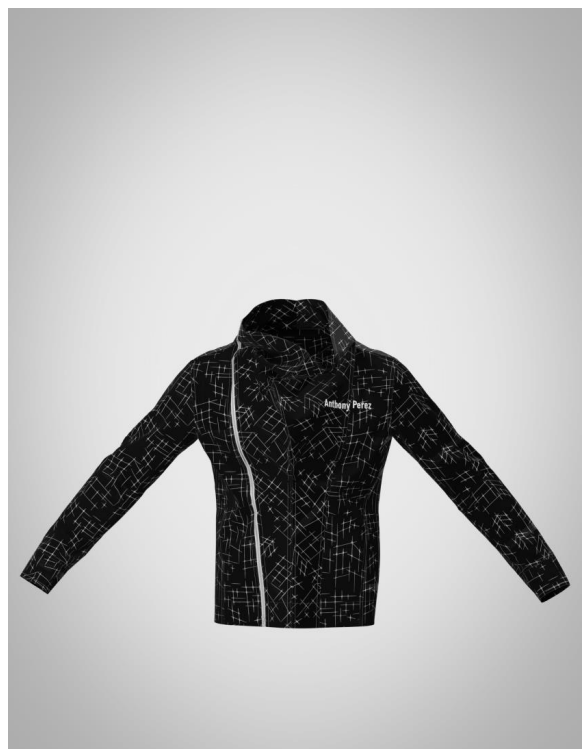
Metropolis by Scott Gillis



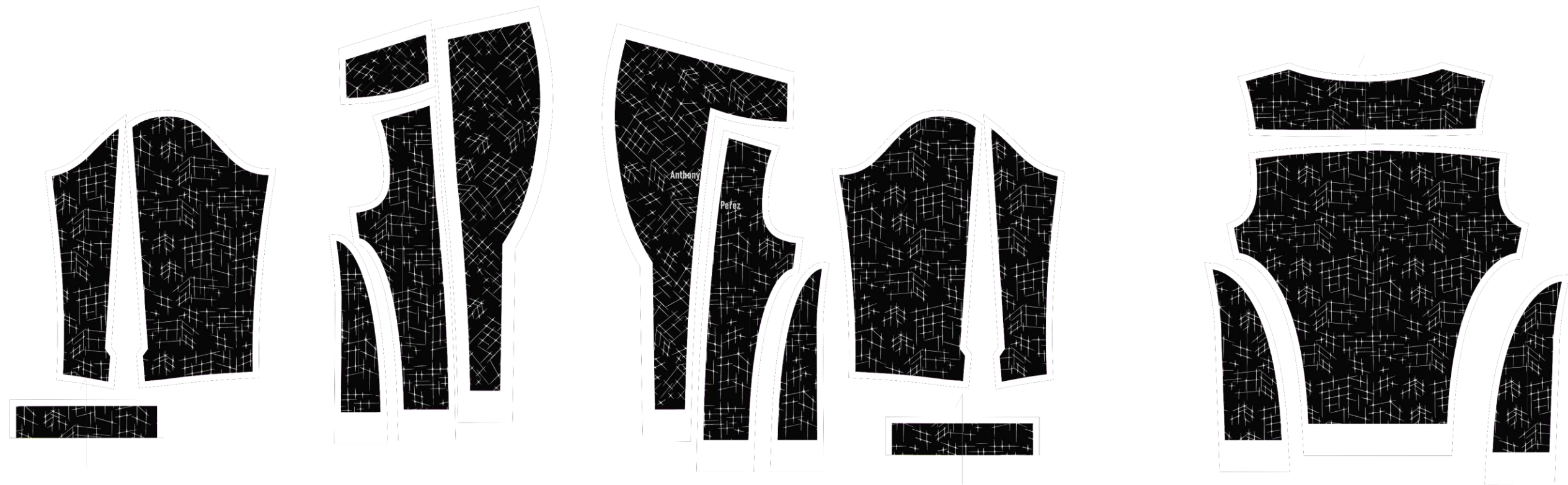
Nick
Roberts
2012



Black And White Render



Print Layout



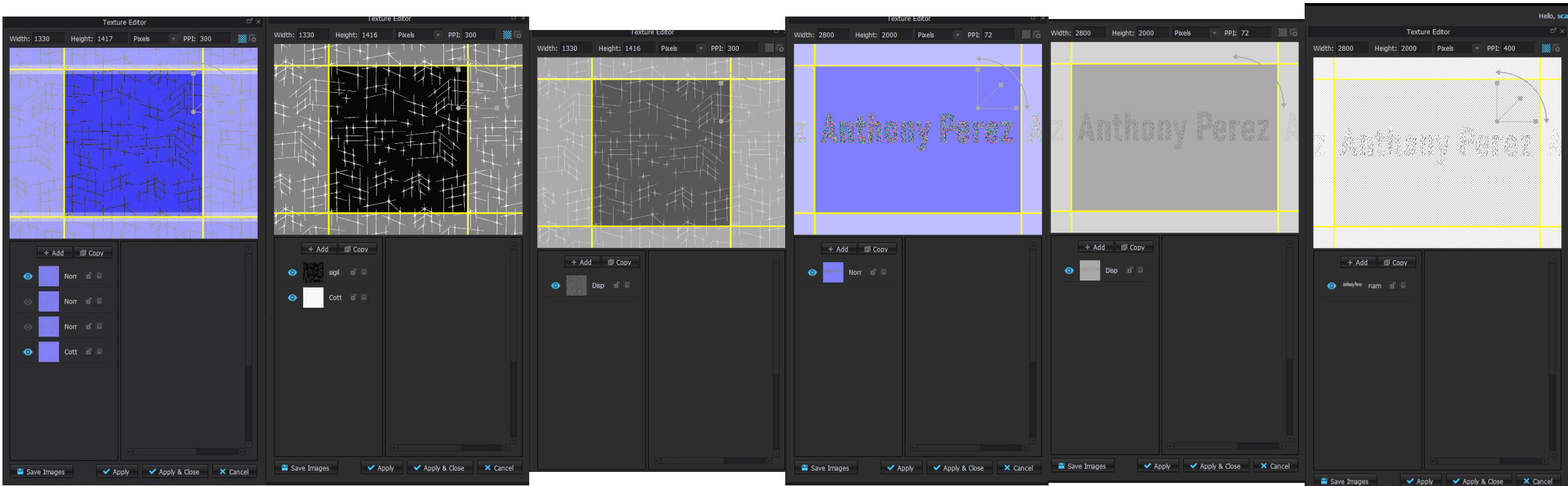
Tan Render



Print Layout



Proof of Normal and Displacement Maps



FLAT SKETCH



Your Brand					GRADED SPEC		
Your Brand					Your Brand		
					SAMPLE SIZE		
Code (SEE MSMNT GUIDE)	POM Description	TOL+/-	2 (XS)	4 (S)	6 (M)	8 (L)	10(XL)
	Front Length				24		
	Center Front Length				29		
	Center Back Length				25		
	Side Length				15 1/2		
	Chest Width				2		
	Across Shoulder				19		
	Across Back				19		
	Bottom Opening				38		
	Sleeve Length Top				23		
	Sleeve Length Underarm				15 1/2		
	Sleeve Opening				11		
	Collar Height				3 1/2		

Your Brand								BOM	
Your Brand								Your Brand	
FABRICS								COLORWAYS	
TYPE	SUPPLIER	REF. #	DESC.	FINISHES	CONTENT	WEIGHT	CONSTRUCTION		
Twill	Joann		100% Cotton	Black and white print					
Twill	Joann		100% Cotton	Tan Print					
TRIMS								COLORWAYS	
TYPE	SUPPLIER	REF. #	DESC.	PLACEMENT	SIZE			0	0
Zipper			plactic	front right torso	28'				
Thread			White cotton	Right Chest and all over print					
Thread			Tan cotton	Right Chest and all over print					
2 Buttons			White Plastic	Wrist cuffs	3/4 in				
LABELS/HANGTAGS								COLORWAYS	
TYPE	SUPPLIER	REF. #	DESC.	PLACEMENT	QTY	SIZE		0	0
Geometric Print Black			Embroidered Repeat	all over				1	
Geometric print Tan			Embroidered Repeat	all over					2
Name White			Embroidered Graphic	right chest	1	4 x 3 in		1	
Name Tan			Embroidered Graphic	right chest	1	4 x 3 in			2

FABRIC MAP

Name



Geometric Print

