

# TERRA

BRAND: ARDEA

DESIGNER: REN

STYLE #: T-NOVA15000-1

DESCRIPTION: SOLID POCKET BAG PANEL JACKET

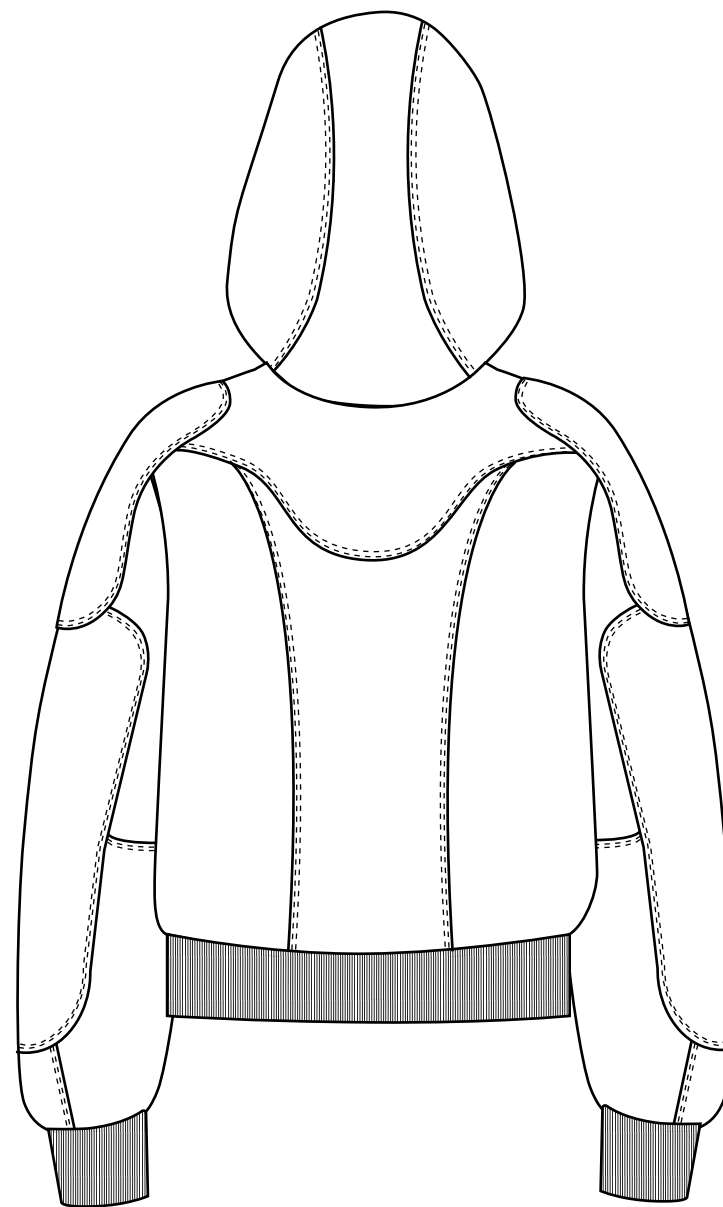
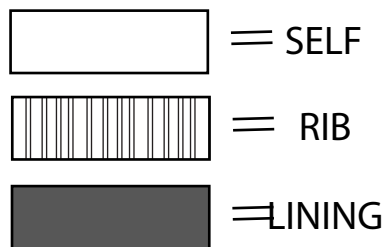
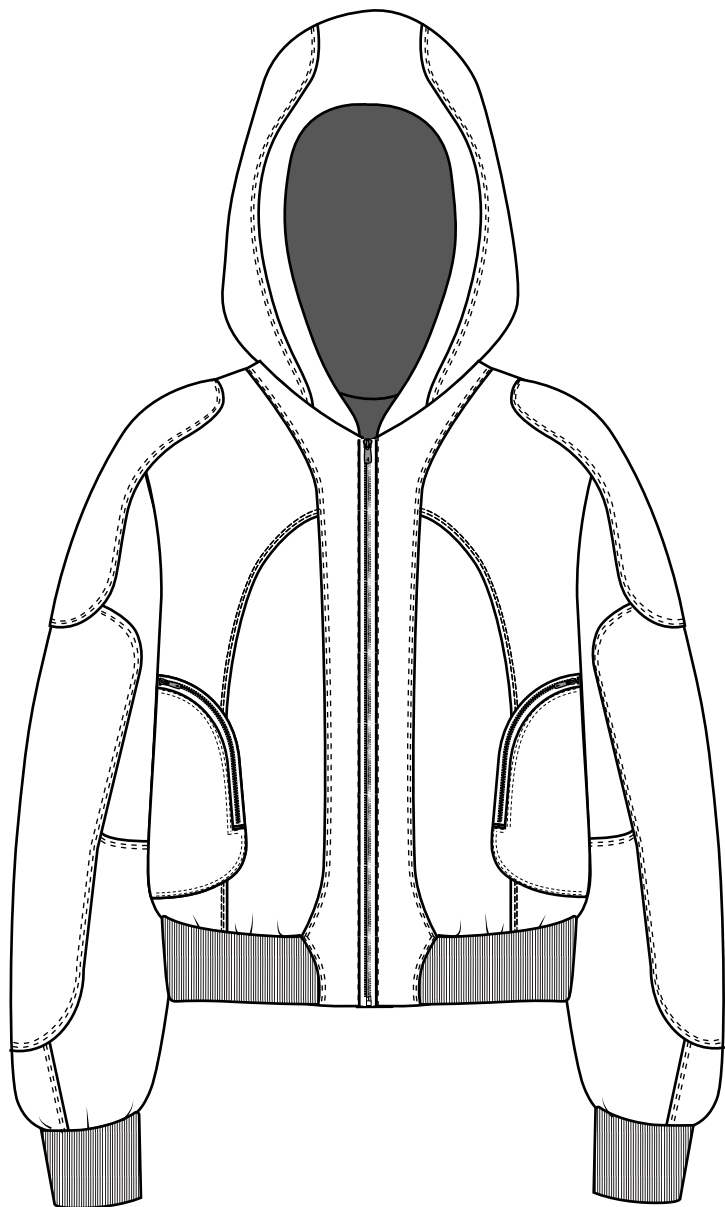
COLLECTION/SEASON: FALL 25

DATE CREATED : 2024.11.7

FRONT

## SKETCH

BACK



SIZE RANGE & [SAMPLE SIZE]: S [M] L XL

**TERRA**

COLLECTION/SEASON: FALL 25

STYLE #: T-NOVA15000-1

**FABRIC**

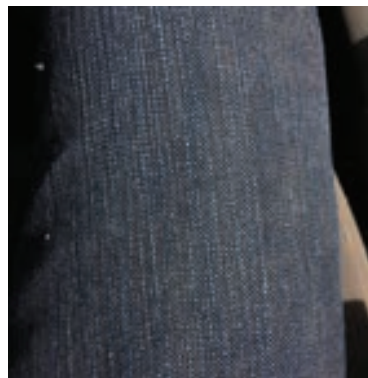
SELF SWATCH #1

CONTRAST SWATCH #1

Lining

FILLING

FACE

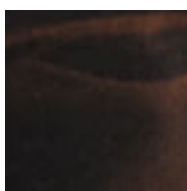


NAME: TATE-OCHI DENIM  
 CONTENT: 100% COTTON  
 WEIGHT: 10 oz.

COLORWAYS:

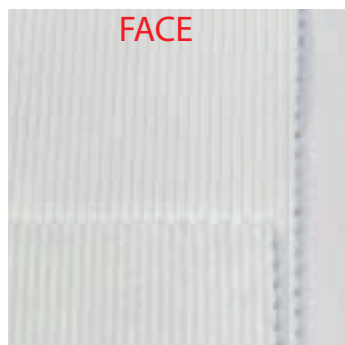


#001  
 STONE  
 GREY



#002  
 OFF  
 BLACK

FACE

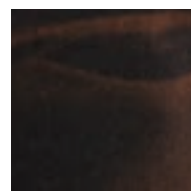


NAME: 2X2 RIB KNIT  
 CONTENT: 100% COTTON

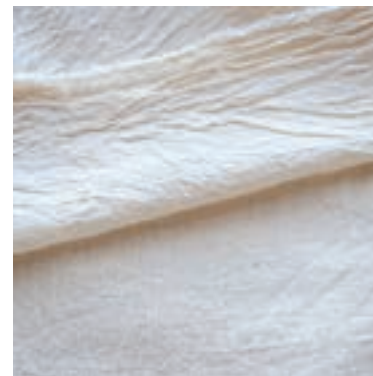
COLORWAYS:



#001  
 STONE  
 GREY



#002  
 OFF  
 BLACK

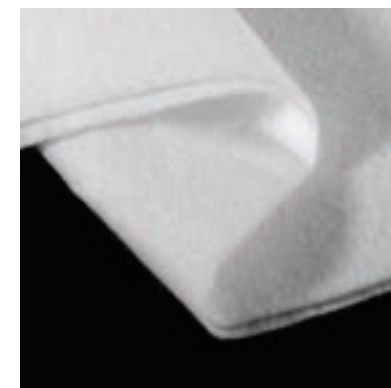


NAME: PLAIN WEAVE  
 CONTENT: 100% TENCEL  
 WEIGHT:

COLORWAYS:



#002  
 OFF  
 BLACK



NAME: BATTING FILLING  
 CONTENT: 100% COTTON  
 WEIGHT: 120GSM

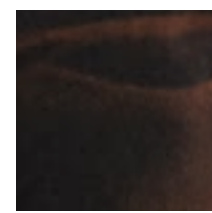
**SOURCE COLOR CARD OPTIONS AND SEND FOR APPROVAL**

# TERRA

COLLECTION/SEASON: FALL 25

STYLE #: T-NOVA15000

WASH SPECS: RUST WASH



REFERENCE  
(COPY AS CLOSELY AS POSSIBLE)  
ONLY THE SHELL IS WASHED  
LINING AND BATTING IS ADDED AFTER WASH

WASH FROM BLACK

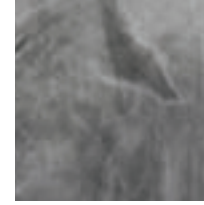


# TERRA

COLLECTION/SEASON: FALL 25

STYLE #: T-NOVA12000

WASH SPECS: STONE GREY



## REFERENCE

(COPY AS CLOSELY AS POSSIBLE)

ONLY THE SHELL IS WASHED

LINING AND BATTING IS ADDED AFTER WASH

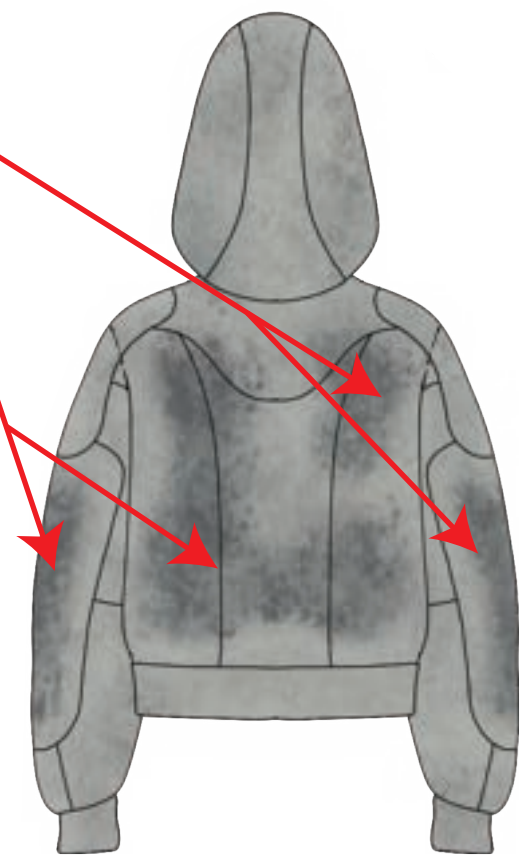
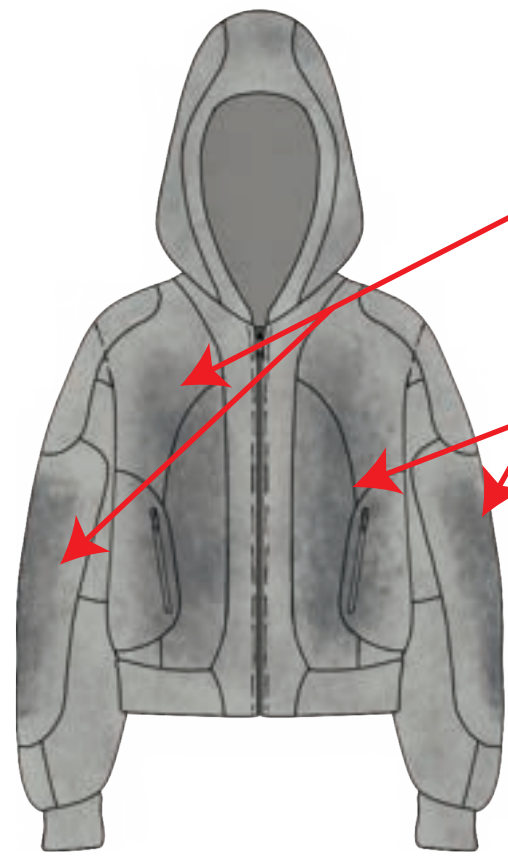


COLLECTION/SEASON: FALL 25

STYLE #: T-NOVA15000-1

# WASH MAP: STONE GREY

CONCENTRATE DARKEST COLOR  
(PANTONE 18-0403 TCX)  
IN NOTED AREAS



COLLECTION/SEASON: FALL 25

STYLE #: T-NOVA15000-1

TRIMS

ZIPPER #1



Name: METAL ZIPPER 1

Metal Color ANTIQUE SILVER (NON SHINY)

Tape Color: MATCH TO SELF

Size: 5MM TEETH

Type: CLOSED BOTTOM

Length: 21 INCHES

Quantity per pc: 1

PLACEMENT/NOTES:

CENTER FRONT ZIPPER

LENGTH ABOVE IS FOR SIZE SMALL.

GRADE FOR EACH SIZE

COLORWAYS:

ZIP HEAD



#001  
LIGHT GREY



#002  
BLACK

MUST HAVE OLD -  
TARNISHED SILVER LOOK

TAPE

ZIPPER #2



Name: METAL ZIPPER 2

Metal Color ANTIQUE SILVER (NON SHINY)

Tape Color: MATCH TO SELF

Size: 5MM TEETH

Type: CLOSED BOTTOM

Length: 8 INCHES

Quantity per pc: 2

PLACEMENT/NOTES:

TOP POCKET ZIPPER

LENGTH ABOVE IS FOR SIZE SMALL.

GRADE FOR EACH SIZE

COLORWAYS:

ZIP HEAD



#001  
LIGHT GREY



#002  
BLACK

MUST HAVE OLD -  
TARNISHED SILVER LOOK

TAPE

COLLECTION/SEASON: FALL 25

STYLE #: T-NOVA15000-1

## SPEC CHART

**BELOW SPECS ARE FINISHED SPECS. MEASURED FLAT**  
**MEASURED IN SIZE MEDIUM**

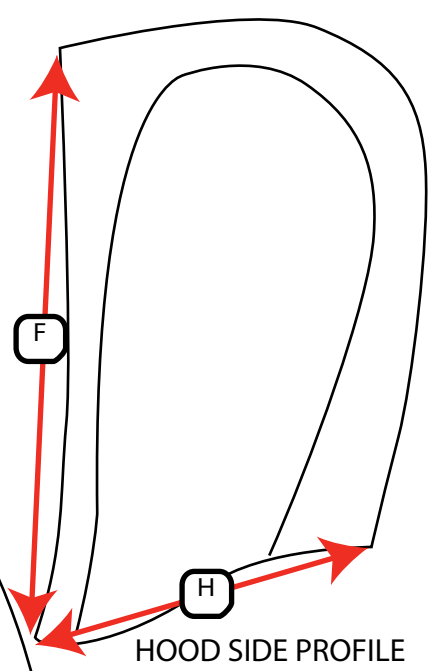
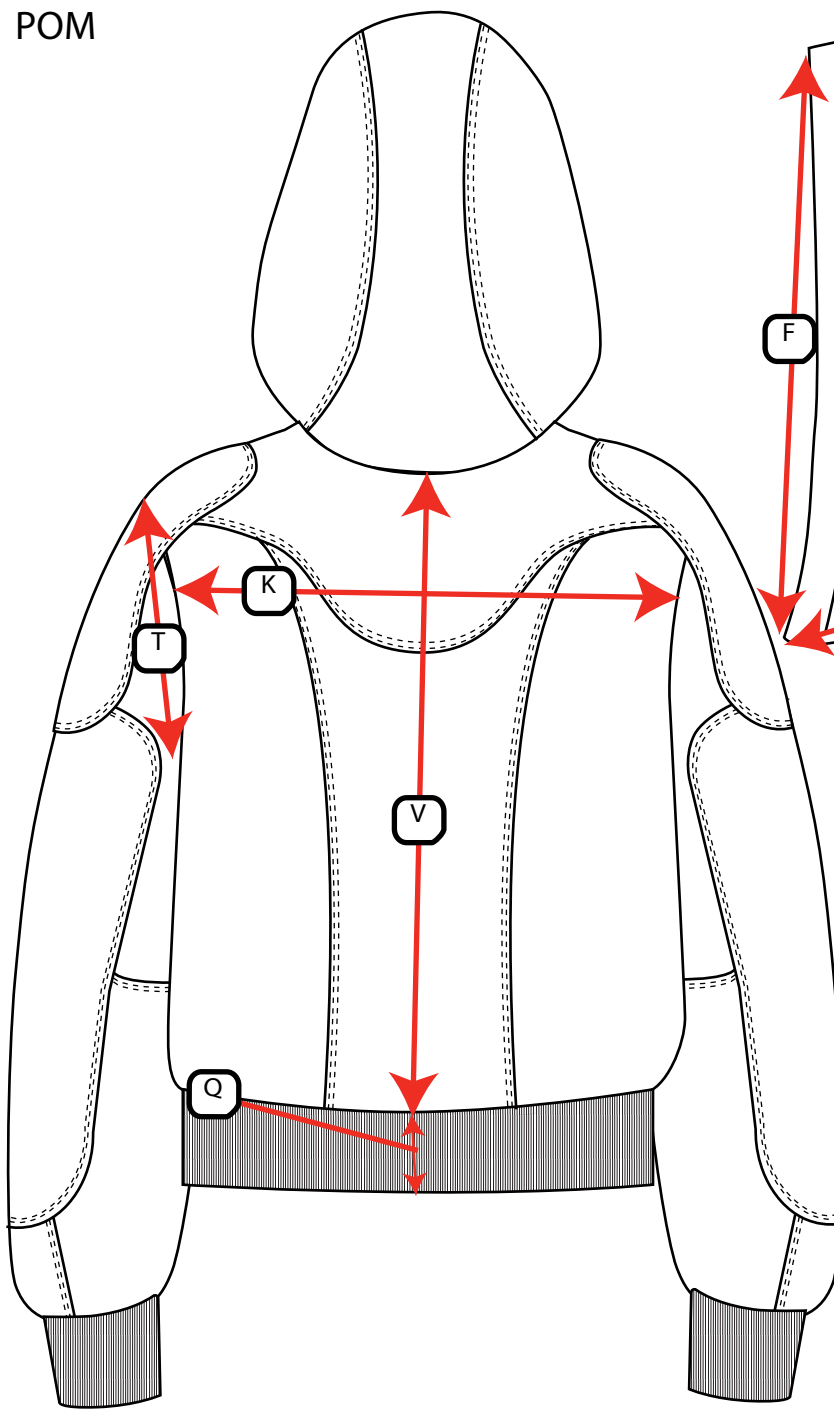
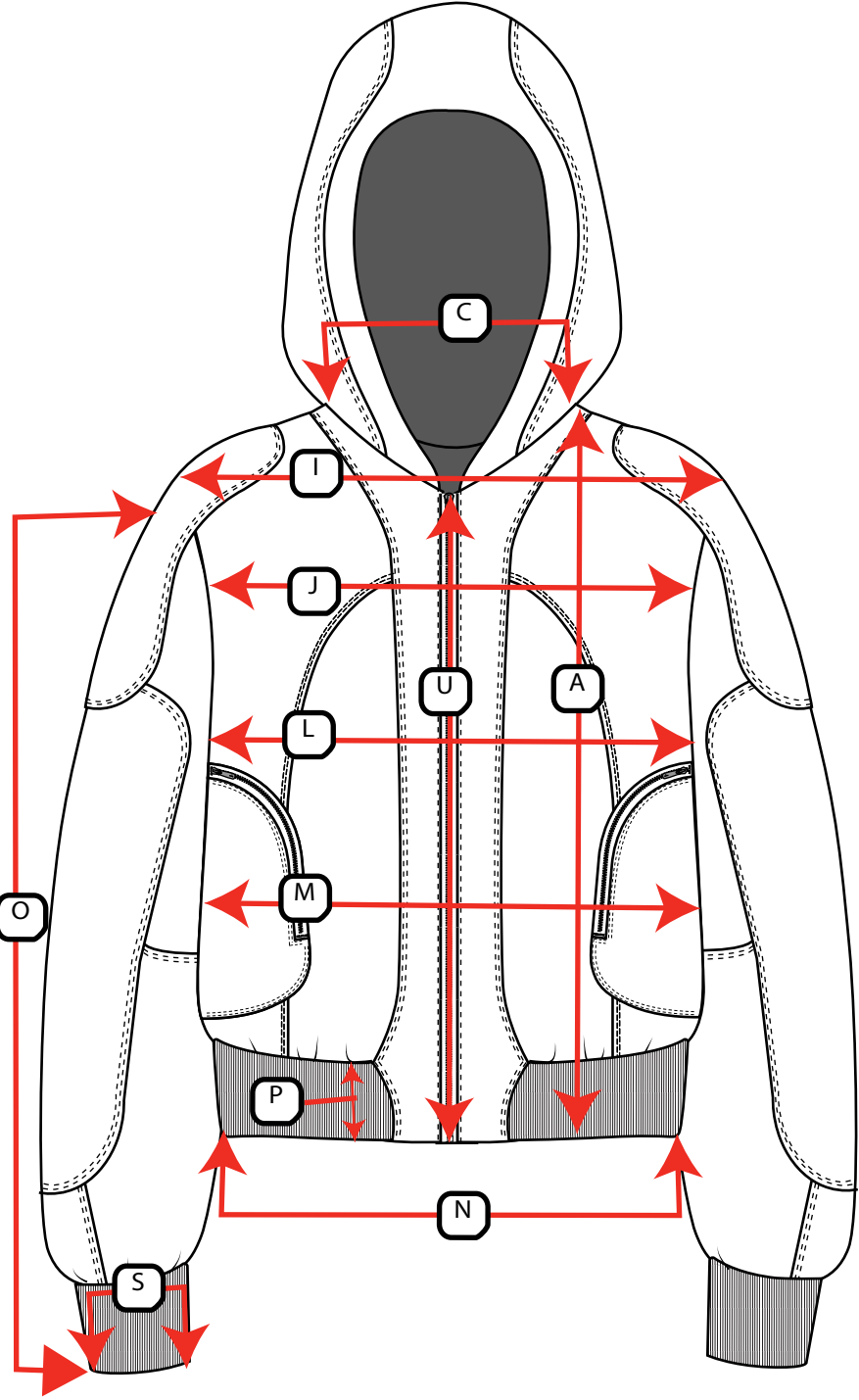
A. BODY LENGTH FROM HPS	24.5"
B. SHOULDER SEAM FORWARD	.75"
C. NECK WIDTH EDGE TO EDGE	9.5"
D. FRONT NECK DROP TO EDGE	2"
F. HOOD OPENING	15.75"
H. HOOD WIDTH (BOTTOM)	11.5"
I. ACROSS SHOULDER	24"
J. ACROSS FRONT 5" DOWN HPS	22"
K. ACROSS BACK 5" DOWN HPS	22.5"
L. CHEST 1" DOWN FROM A.H.	25.5"
M. WAIST 7" DOWN A.H.	22.5"
N. BOTTOM OPENING	21"
O. SLEEVE LENGTH TOTAL (INCLUDING CUFF)	24"
P. FRONT WAISTBAND WIDTH	2"
Q. BACK WAISTBAND WIDTH	3.25"
R. BICEP 1" BELOW A.H.	12"
S. SLEEVE OPENING	4.5"
T. A.H. (STRAIGHT)	12.25"
U. CF LENGTH	21"
V. CB LENGTH	24"

**FULL GRADING WILL BE PROVIDED AFTER DEVELOPMENT**

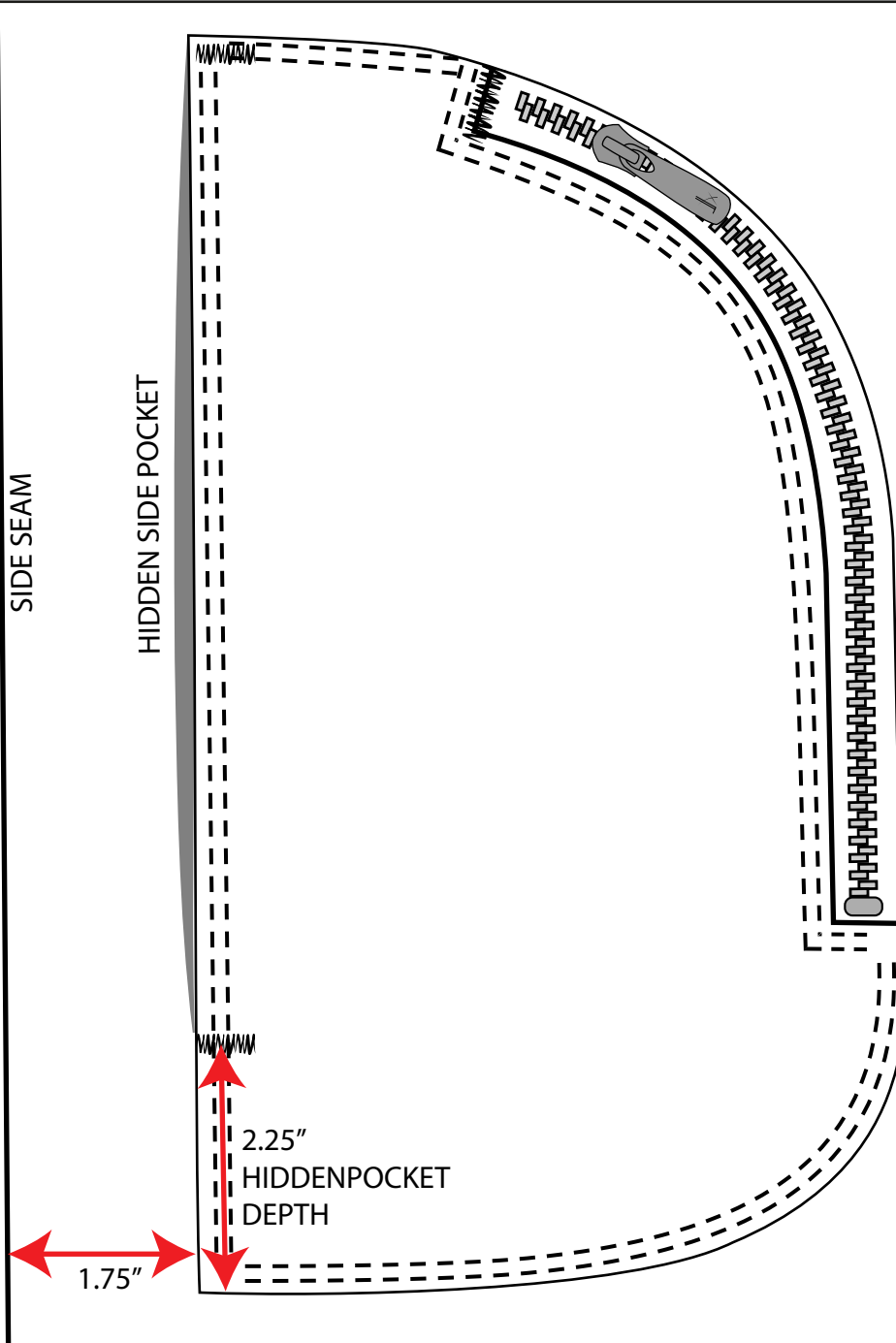
COLLECTION/SEASON: FALL 25

STYLE #: T-NOVA15000-1

POM



HOOD SIDE PROFILE



SEE EXAMPLE SAMPLE  
 "TERRA JACKET POCKET"  
 FOR CONSTRUCTION

EXAMPLE SAMPLE



HIDDEN SIDE POCKET

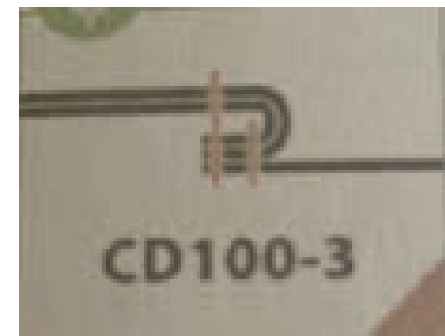
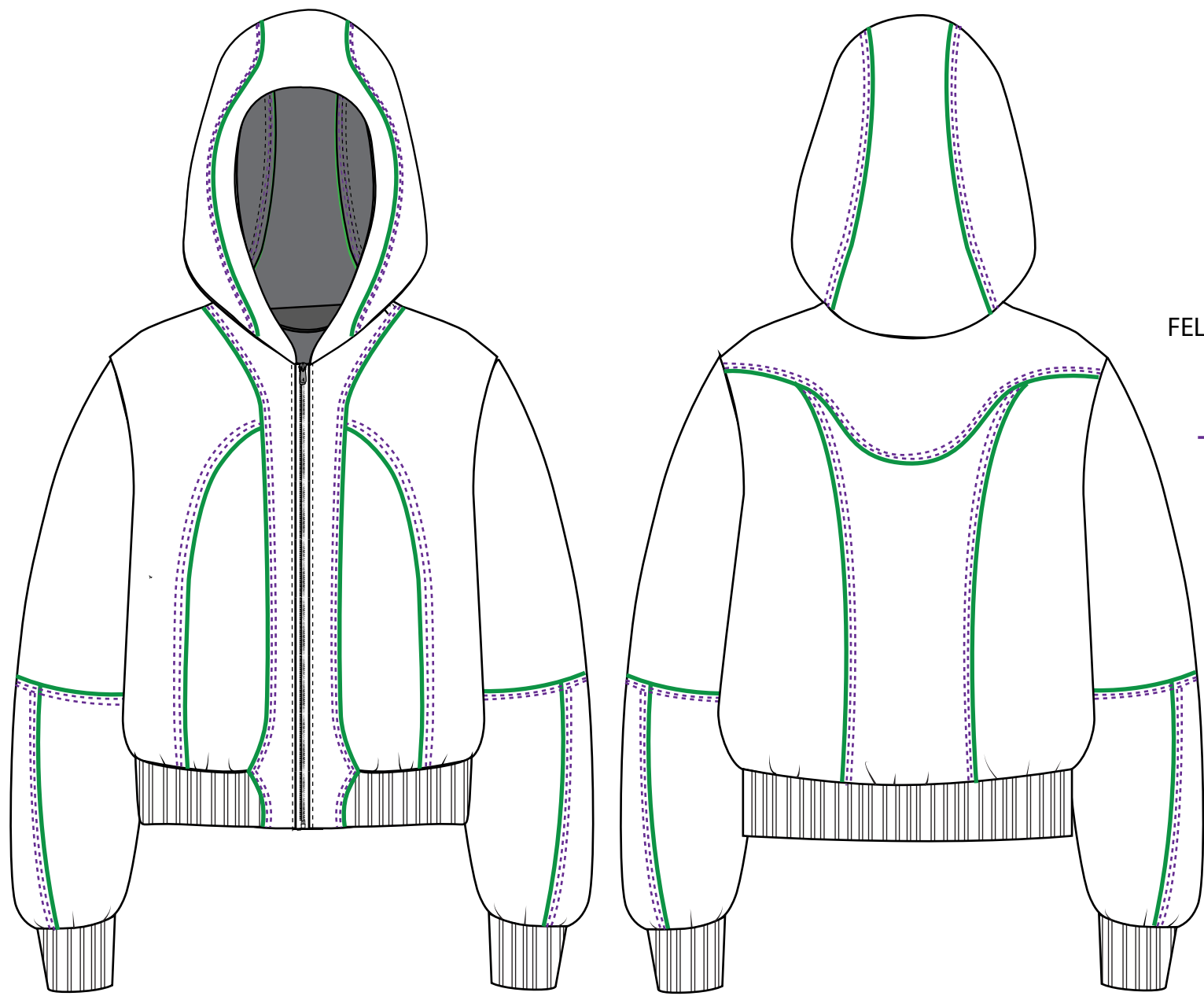


CARGO ZIPPER POCKET

COLLECTION/SEASON: FALL 25

STYLE #: T-NOVA15000-1

JACKET HAS BOTH STYLE LINES AND PANELS.  
SEE BELOW FOR STYLE LINE PLACEMENT IN GREEN

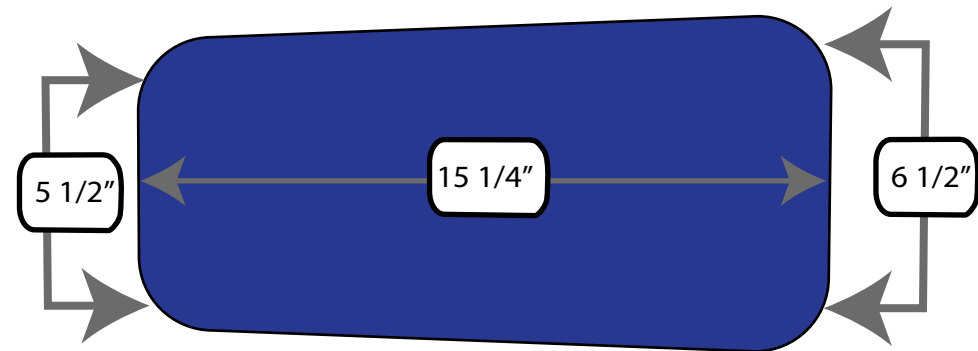
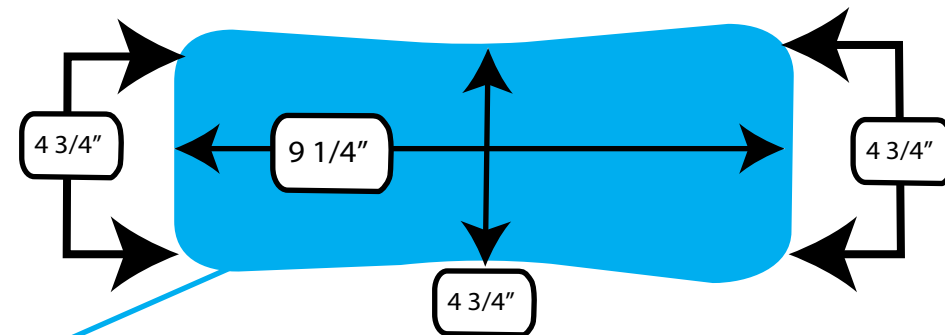
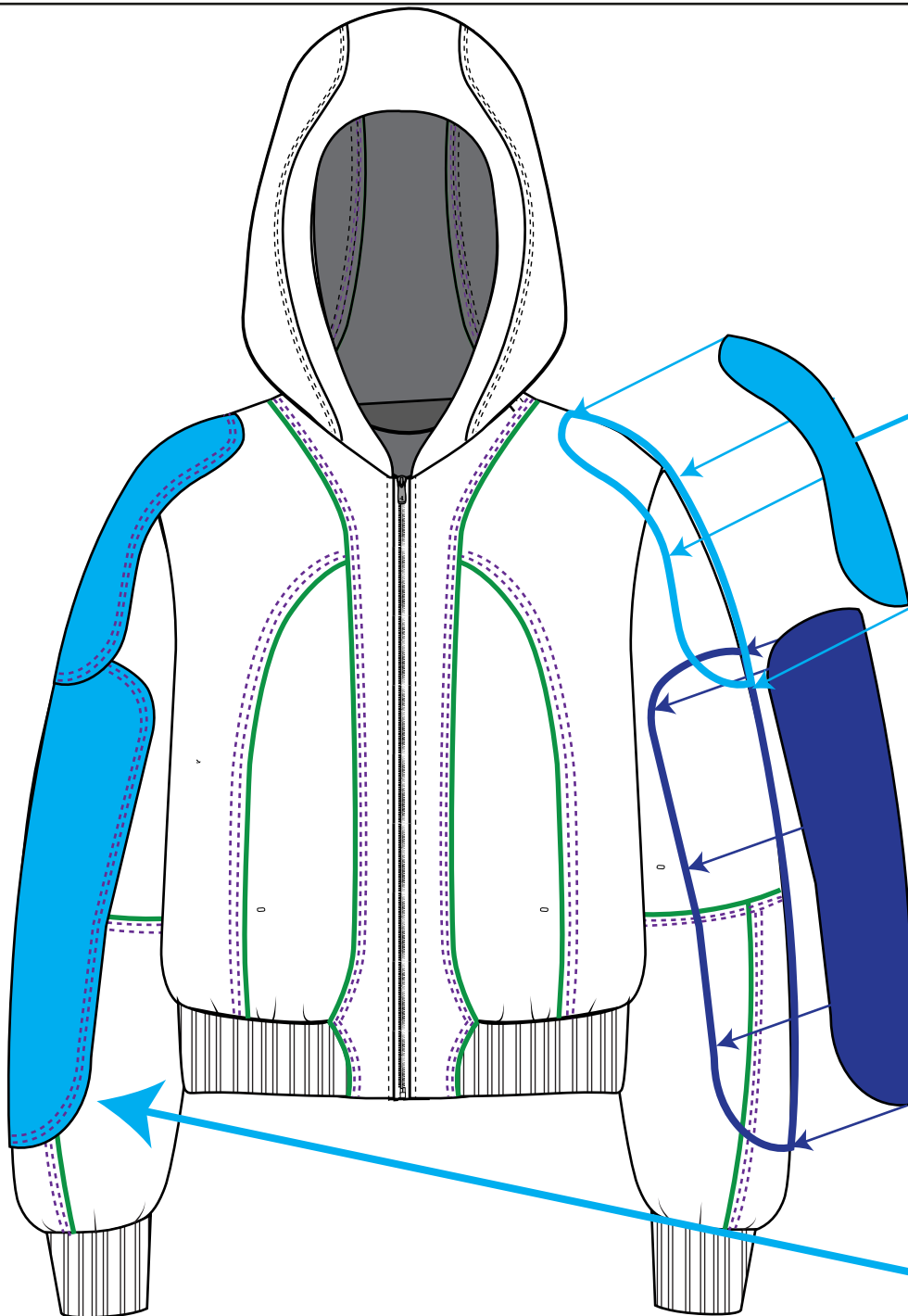


ALL STYLE LINE SEAMS ARE  
FELLED SEAMS WITH DOUBLE NEEDLE  
TOP STITCH

SEE PURPLE FOR  
TOPSTITCH PLACEMENT

COLLECTION/SEASON: FALL 25

STYLE #: T-NOVA15000-1



MEASUREMENTS FOR SIZE SMALL: GRADE FOR EACH SIZE

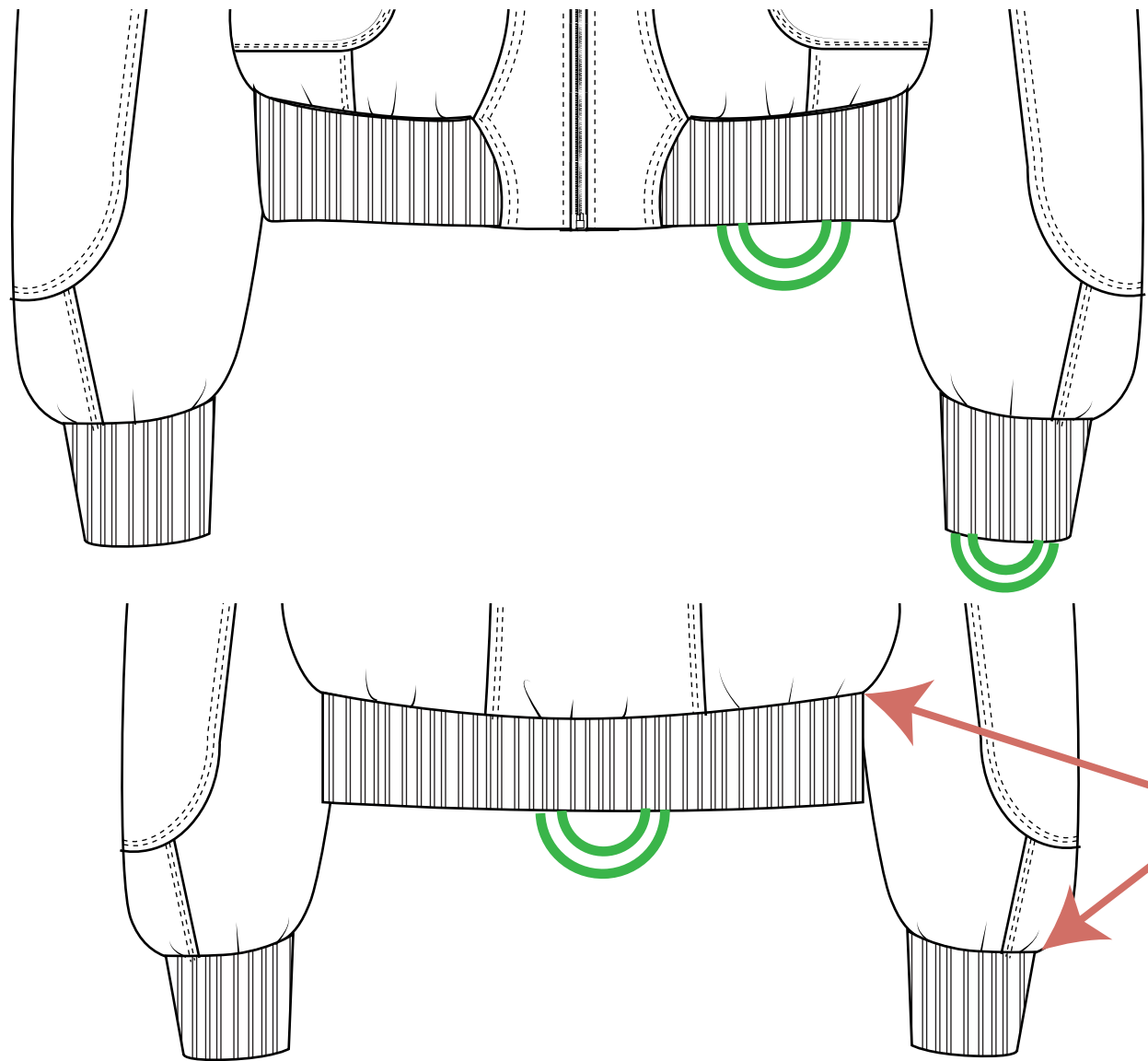
PANELS GOES OVER SIDE SEAM AND STYLE LINES;  
ATTACH TO PANT WITH DOUBLE NEEDLE  
TOP STITCH



PANEL DOES NOT HAVE SIDE SEAM

COLLECTION/SEASON: FALL 25

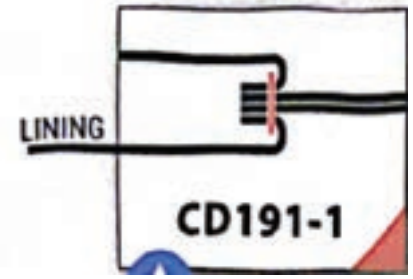
STYLE #: T-NOVA15000-1



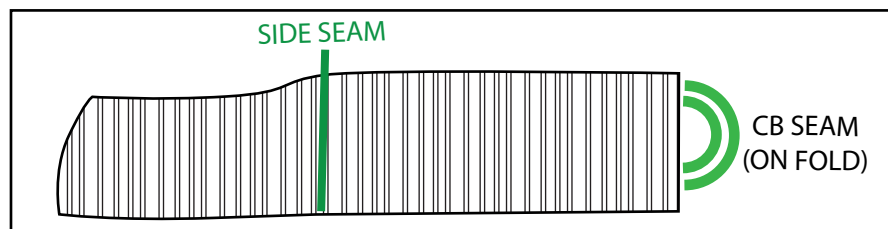
WAISTBAND AND CUFFS ARE CONTRAST #1 2X2 RIB



SANDWICH CUFF AND WAIST BAND BETWEEN LINING AND SELF



BAND IS SLIGHTLY SMALLER THAN JACKET BODY. STRETCH TO EASE BAND TO BODY TO CREATE SLIGHT SHIRRING



WAIST BAND SHAPE: BACK WAISTBAND IS TALLER THAN FRONT BLEND INTO SMOOTH CURVE AT SIDE SEAM

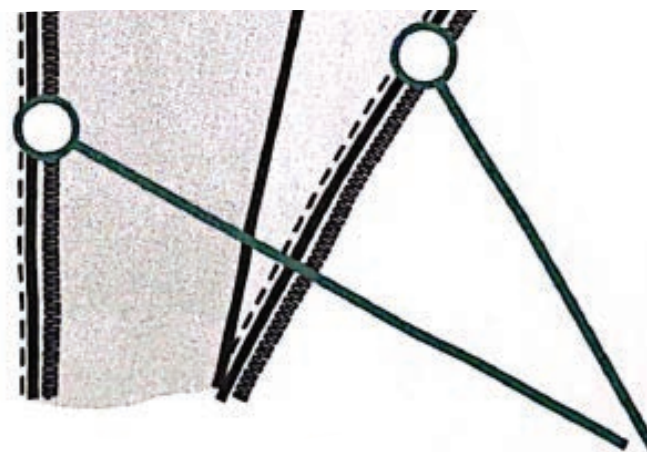
COLLECTION/SEASON: FALL 25

STYLE #: T-NOVA15000-1

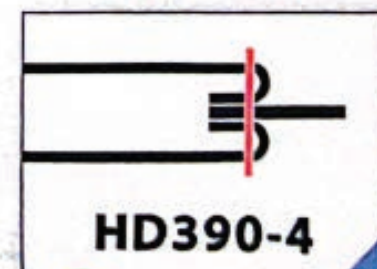
LINE JACKET WITH LIGHT WEIGHT PLAIN WEAVE :CONTRAST #2  
KEEP LINING AS SIMPLE AS POSSIBLE. REDUCE STYLE LINES IF POSSIBLE



SANDWICH CENTER FRONT ZIPPER  
BETWEEN SELF AND LINING



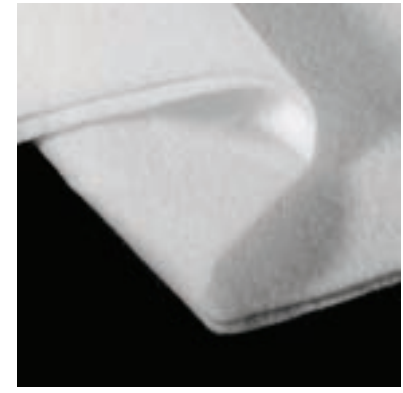
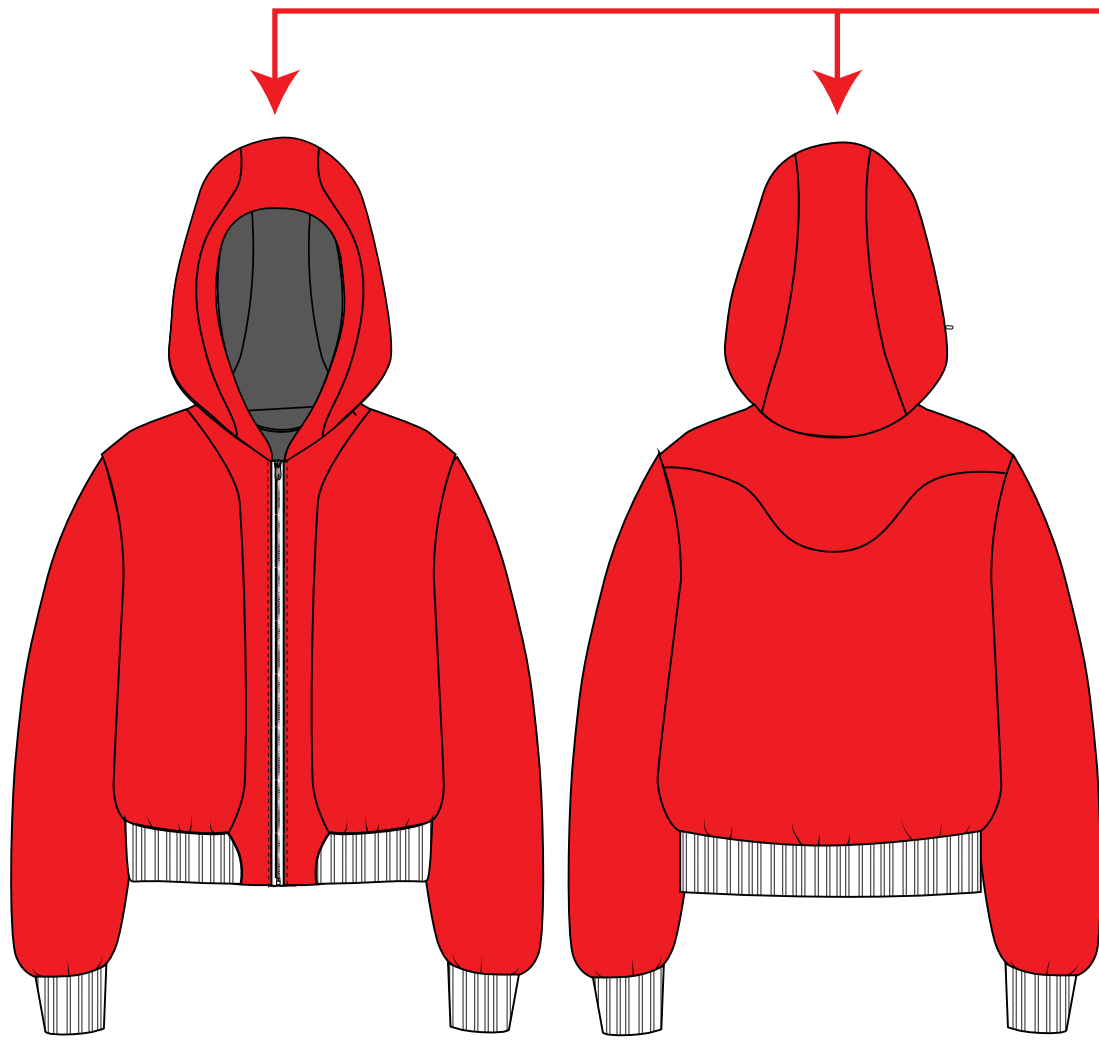
CF ZIPPER



COLLECTION/SEASON: FALL 25

STYLE #: T-NOVA15000-1

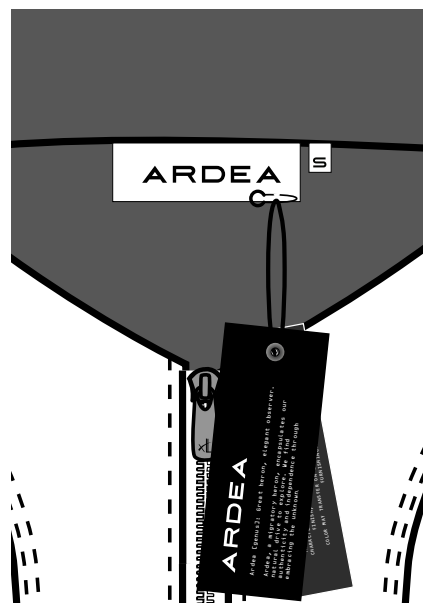
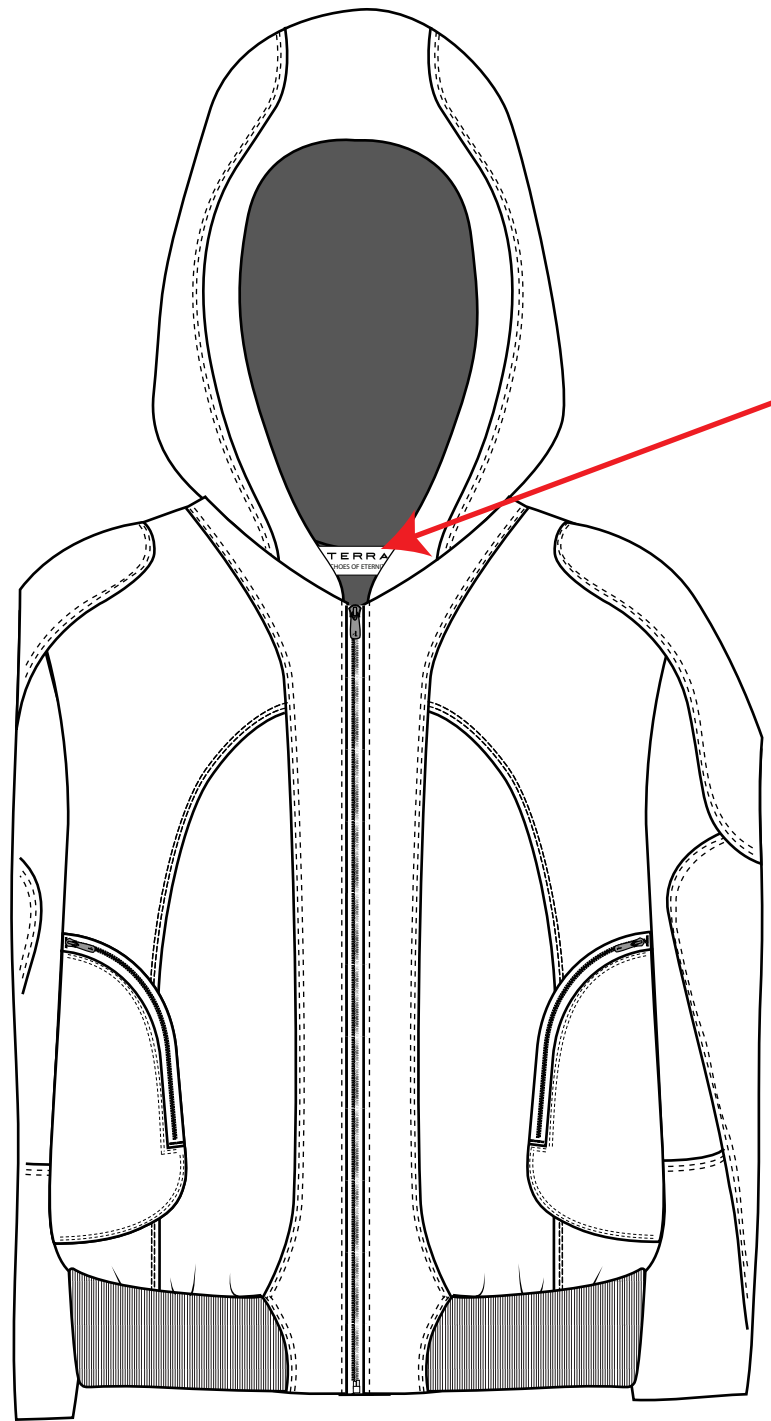
BATTING PLACEMENT



NAME: BATTING FILLING  
CONTENT: 100% COTTON  
WEIGHT: 120GSM  
HIGHLIGHTED IN **RED**

COLLECTION/SEASON: FALL 25

STYLE #: T-NOVA15000-1



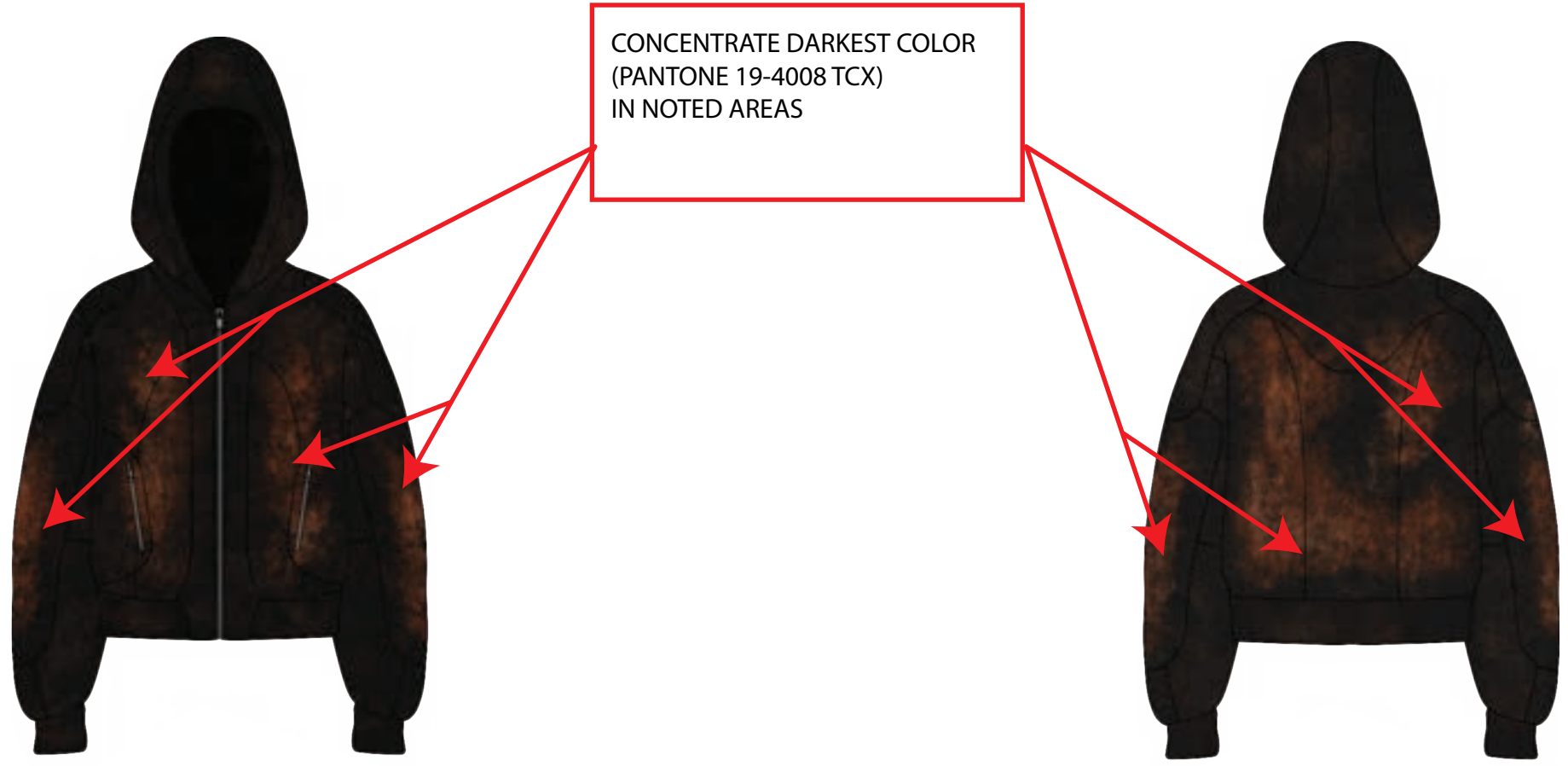
INSERT TAGS INTO  
LINING NECK SEAM  
CENTERED ON NAME TAG

attach hang tags to name label with safety pin

COLLECTION/SEASON: FALL 25

STYLE #: T-NOVA15000-1

# WASH MAP: RUST WASH





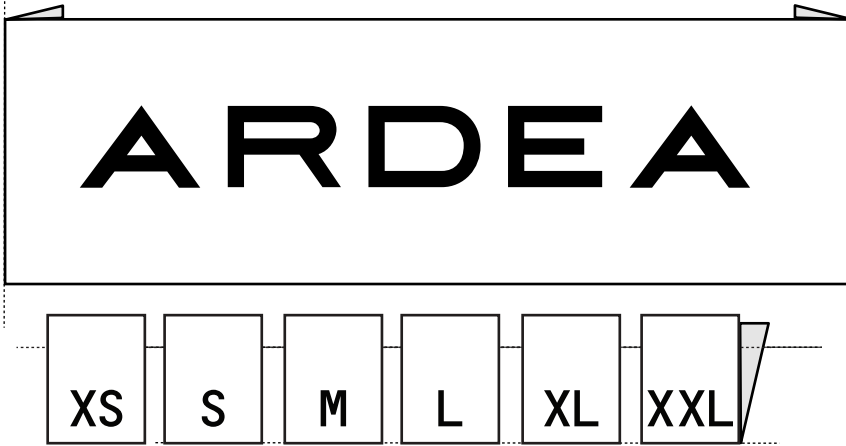
# TERRA

COLLECTION/SEASON: FALL 25

STYLE #: T-NOVA12000

## WOVEN TAG

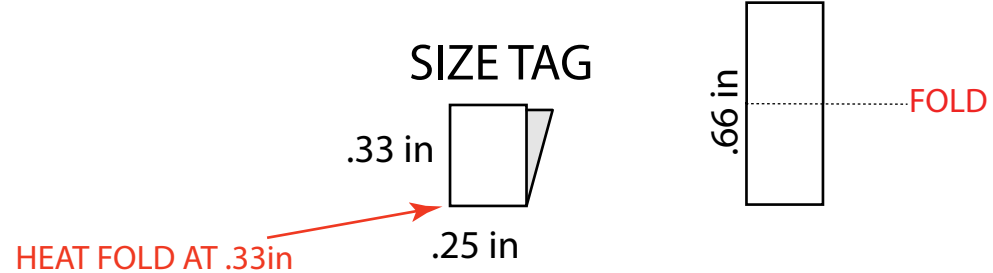
### DESIGN



### SIZE GUIDE MAIN TAG



### SIZE TAG



### ACTUAL SIZE AFTER HEAT PRESSING FOLDS



### TAG STYLE

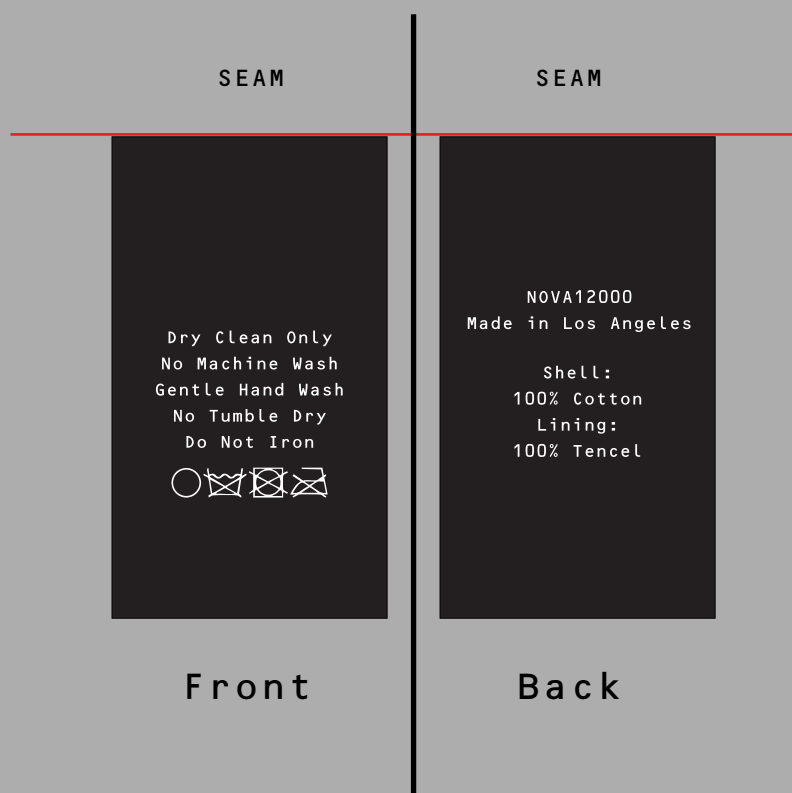
- WOVEN DAMASK TAG



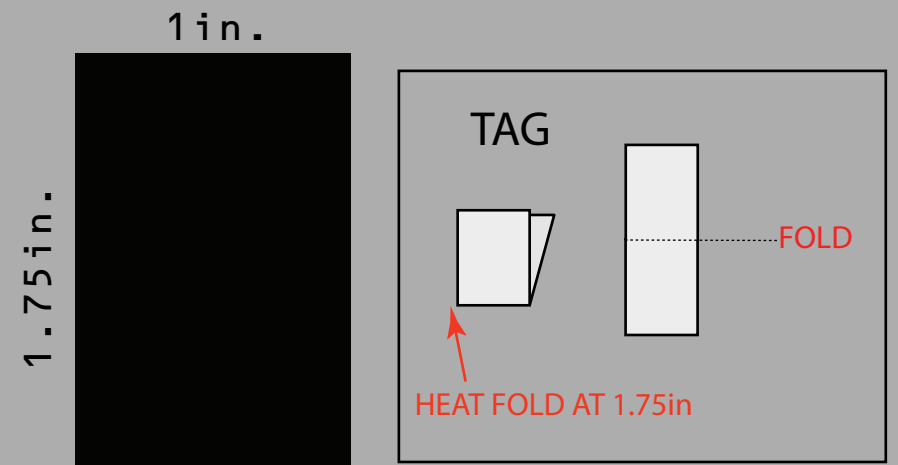
MANUFACTURE NEW TAGS FOR FALL/WINTER\*

# CARE LABEL

## DESIGN



## SIZE GUIDE



## TAG STYLE

- PRINTED SATIN TAG
- BLACK TAG, WHITE PRINT

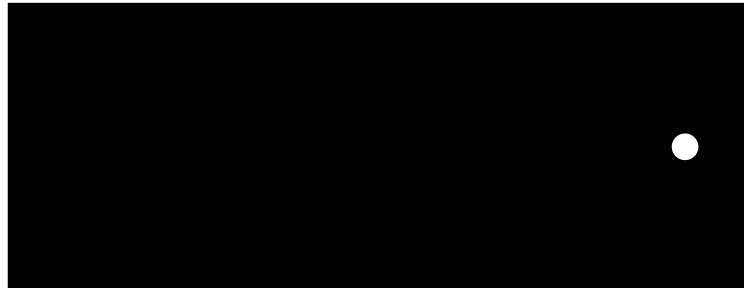


# HANG TAGS

## CARDBOARD BRAND TAG

3.875 in

1.5 in



1.7mm DEPTH

## TAG STYLE

BLACK Uncoated Paper



MATCH CORD TO REFERENCE

## DESIGN

FRONT

# ARDEA

Ardea [genus]: Great heron, elegant observer.

Ardea, a migratory heron, encapsulates our natural drive to explore. We find authenticity and independence through embracing the unknown.

BACK

ardea.la



PANTONE #000000 BLACK

# WASH HANG TAGS

## CARDBOARD BRAND TAG

3.875 in

1 in



1mm DEPTH

## TAG STYLE

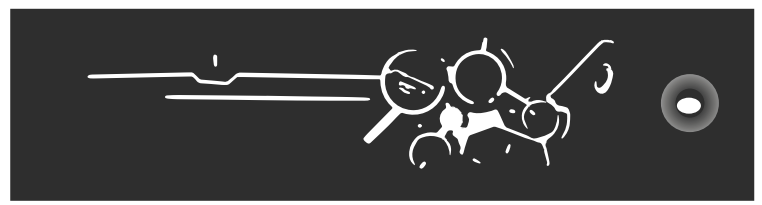
GREY Uncoated Paper



MATCH CORD TO REFERENCE

## DESIGN

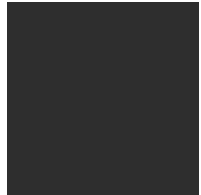
FRONT



BACK



THIS GARMENT HAS UNDERGONE A SPECIAL PROCESS WHICH RESULTS IN VARIATIONS OF SHADING AND COLOR.  
THESE VARIATIONS ARE INTENDED TO ADD TO THE UNIQUE CHARACTERISTICS OF THIS GARMENTS. DUE TO THIS UNIQUE FINISH, COLOR MAY FADE DURING WASHING.  
COLOR MAY TRANSFER ON LIGHT COLORED CLOTHING AND FURNISHINGS.



PANTONE #3F4444 "446 C"