

ARDEA

BRAND: ARDEA

DESIGNER: ANTHONY

STYLE #: CAR601

DESCRIPTION: TEE SHIRT WITH ZIPPER BIB

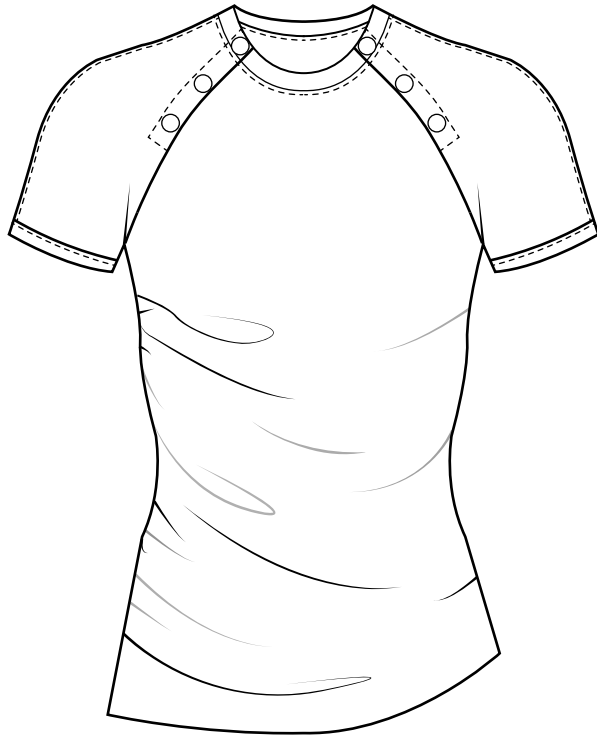
COLLECTION/SEASON: SPRING 26

DATE CREATED : 2025.7.23

FRONT

SKETCH

BACK



SIZE RANGE & [SAMPLE SIZE]: XS S [M] L XL

ARDEA

COLLECTION/SEASON: SPRING26

STYLE #:

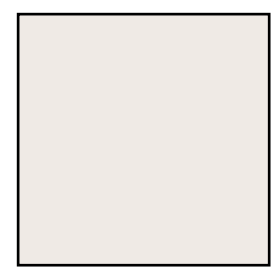
FABRIC

SELF SWATCH #1

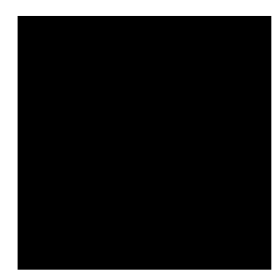


NAME: JERSEY
CONTENT: 100% Macel (hemp lyocell)
WEIGHT: 135 GSM
HEMPFORTEX / CODE: KJ8214

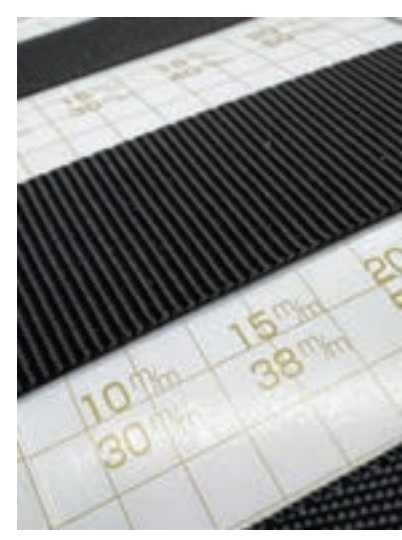
COLORWAYS:



#001
13-0905 TCX



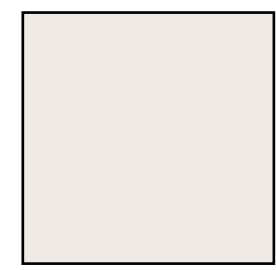
#002
BLACK



NAME: NYLON TAPE

WIDTH: 1"

COLORWAYS:



#001
13-0905 TCX



#002
BLACK

HARDWEAR



Name: METAL SNAP BUTTON

Metal Color ANTIQUE SILVER (NON SHINY)

Size: 13MM

Type: SNAP BUTTON

Quantity per pc: 6

PLACEMENT/NOTES:
EQUAL DISTANCE FROM
EACHOTHER ON OPENING

COLORWAYS:

METAL



MUST HAVE OLD -
TARNISHED SILVER LOOK

WASH SPECS: #002 BLACK-WHITE COLD WASH

REFERENCE
(COPY AS CLOSELY AS POSSIBLE)



TOP COLOR  WASHED BLACK

PHYSICAL WASH REFERENCE



ARDEA

COLLECTION/SEASON:SPRING 26

STYLE #:

SPEC CHART

BELOW SPECS ARE FINISHED SPECS. MEASURED FLAT
MAKE SAMPLE IN MEDIUM

COPY SAMPLE GARMENT*

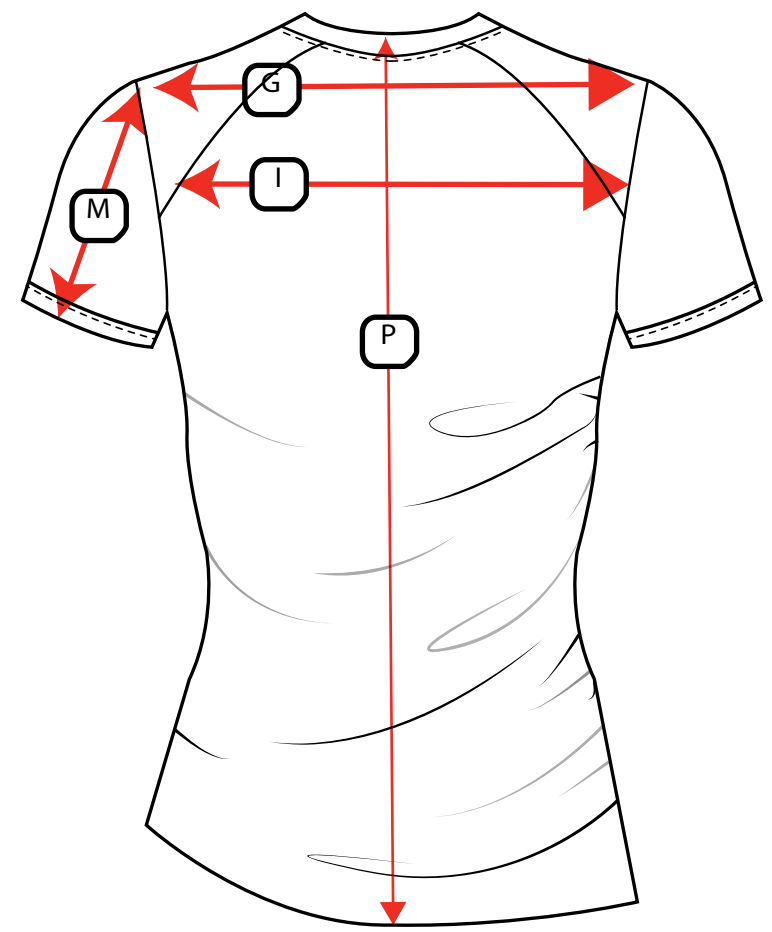
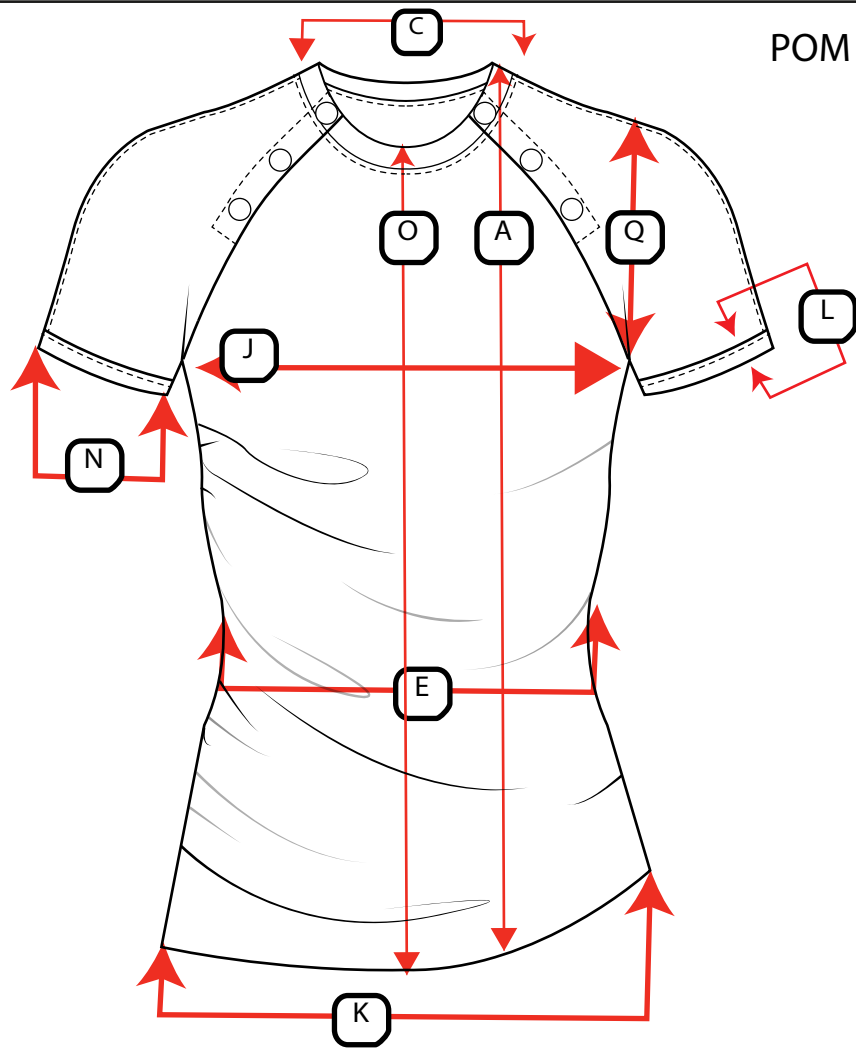
A. BODY LENGTH FROM HPS	23.5"
B. SHOULDER SEAM FORWARD	0"
C. NECK WITH EDGE TO EDGE	8.5"
D. FRONT NECK DROP TO EDGE	1"
E. ACROSS WAIST	12.5"
F. COLLAR WIDTH	0.625"
G. ACROSS SHOULDER	14.5"
I. ACROSS BACK 5" DOWN HPS	13"
J. CHEST 1" DOWN FROM A.H.	14.75"
K. BOTTOM OPENING	17"
L. SLEEVE HEM	0.625"
M. SLEEVE LENGTH TOTAL	7"
N. SLEEVE OPENING	5.25"
O. CF LENGTH	21.5"
P. CB LENGTH	22.75"

ARDEA

COLLECTION/SEASON: SPRING 26

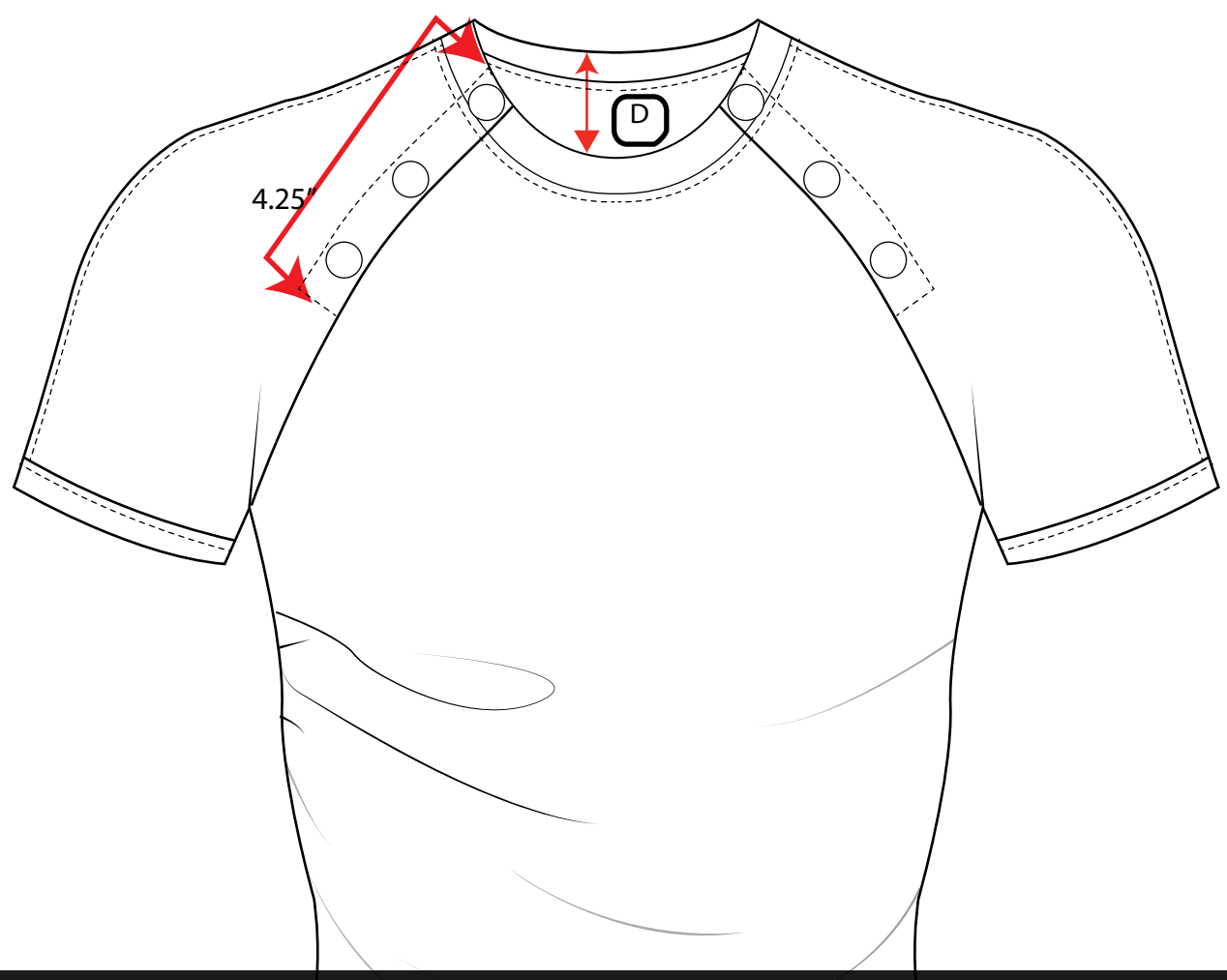
STYLE #:

POM

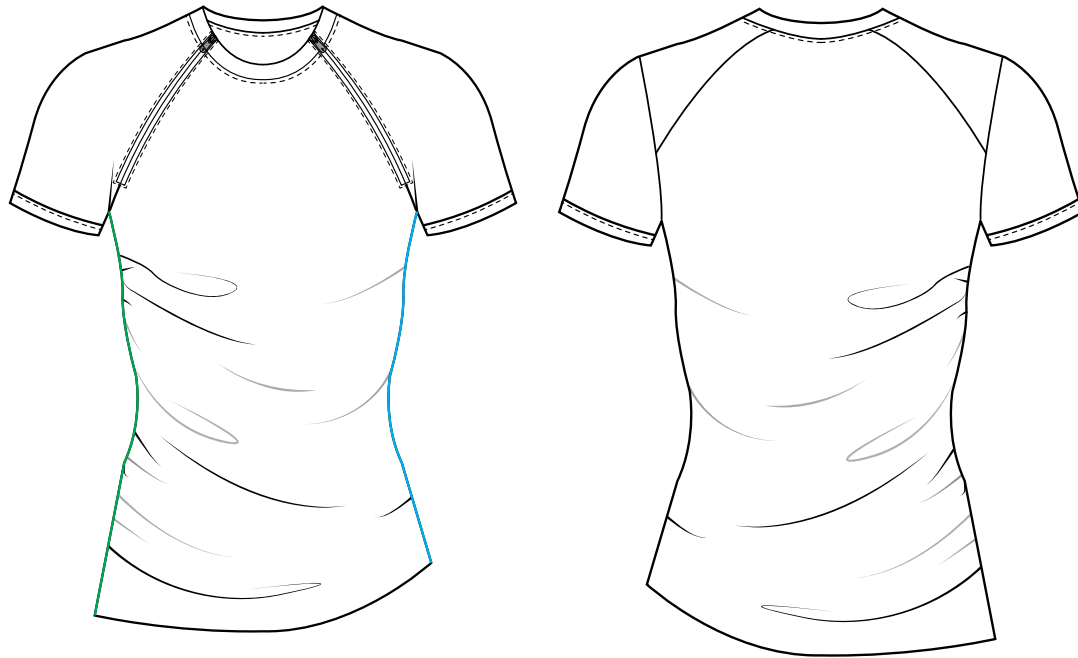


ZIPPERS

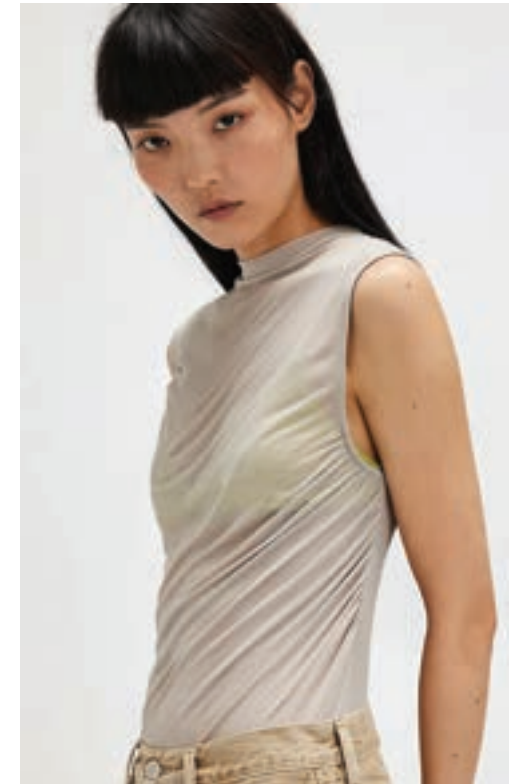
EXAMPLE IMAGE

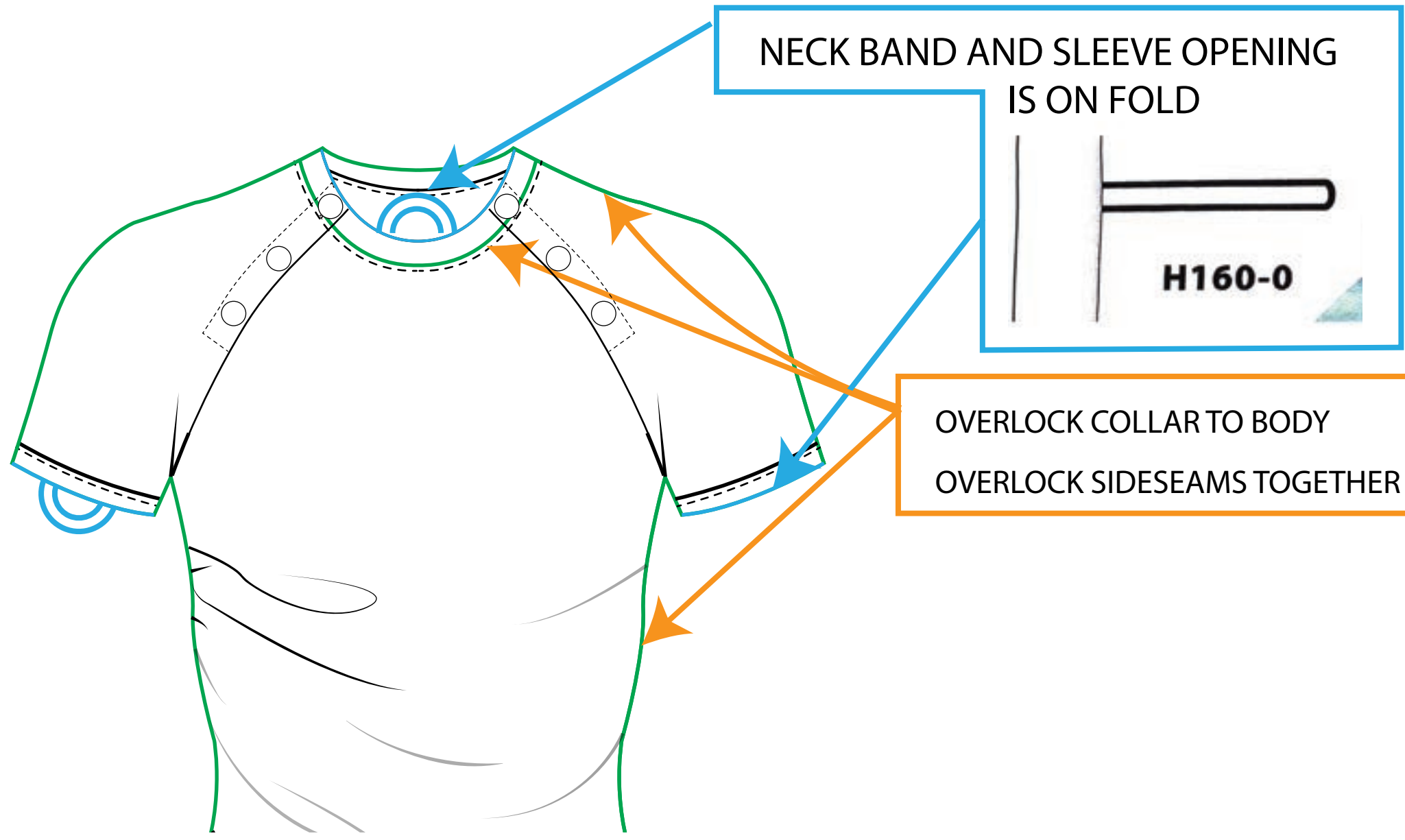


CONSTRUCTION

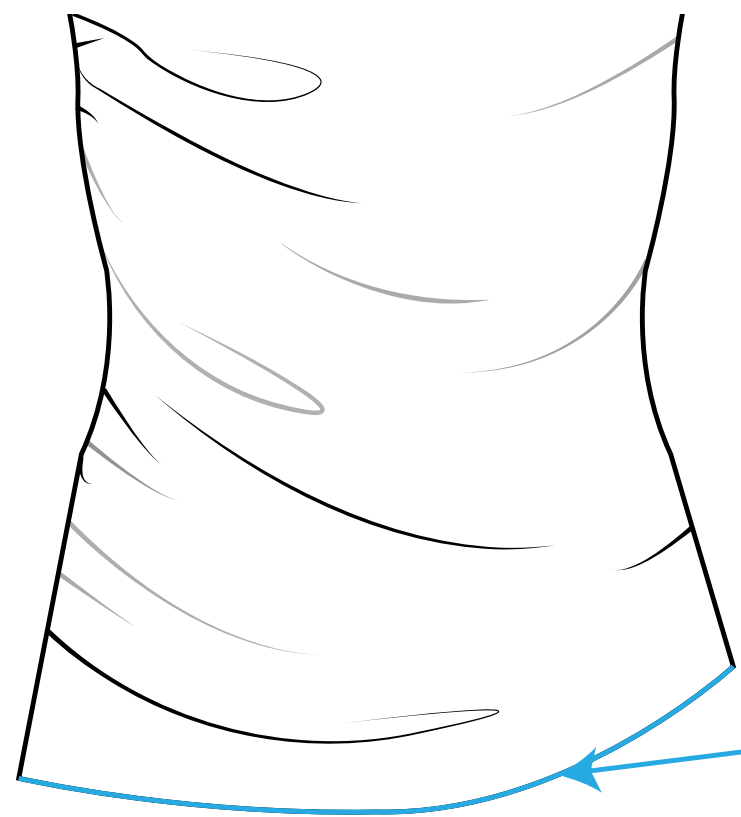


ASYMMETRIC GATHERING TECHNIQUE





SEWING

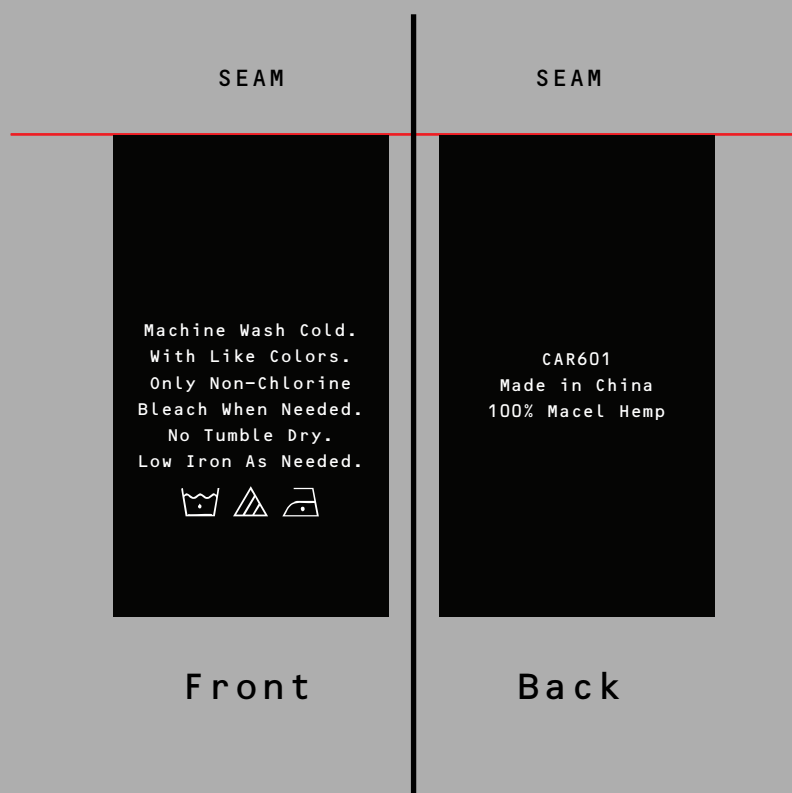


RAW HEM

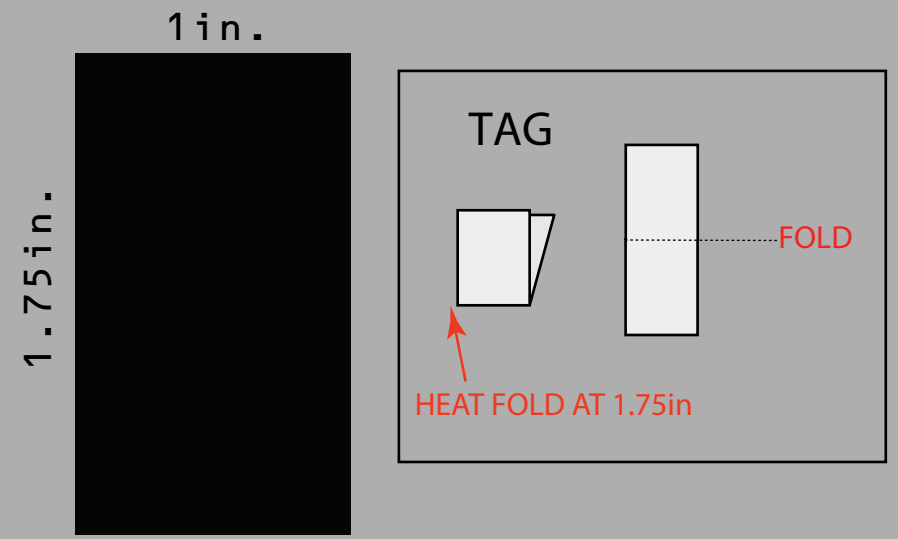


CARE LABEL (BLACK)

DESIGN



SIZE GUIDE



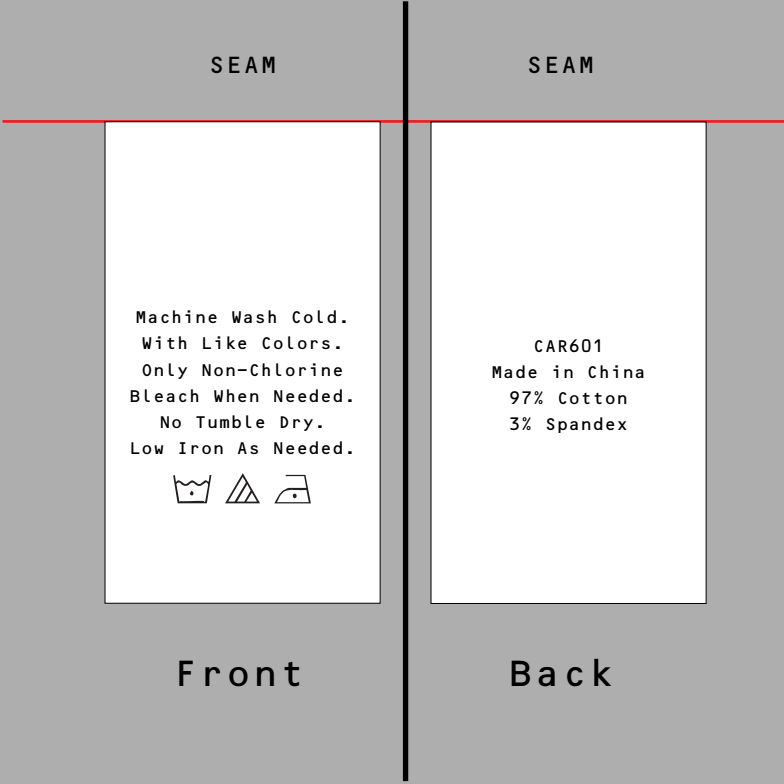
TAG STYLE

- PRINTED SATIN TAG
- BLACK TAG, WHITE PRINT

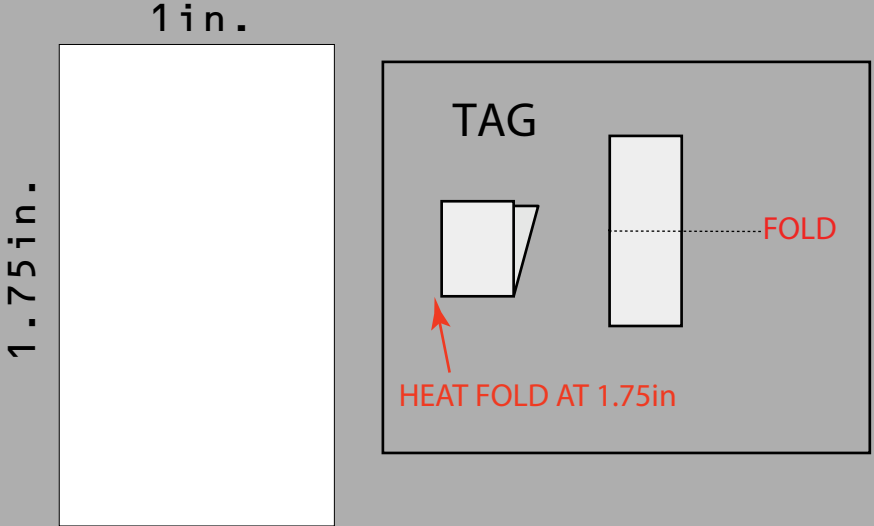


CARE LABEL (13-0905 TCX)

DESIGN



SIZE GUIDE



TAG STYLE

- PRINTED SATIN TAG
- BLACK TAG, WHITE PRINT



HANG TAGS

CARDBOARD BRAND TAG

3.875 in

1.5 in



1.7mm DEPTH

TAG STYLE

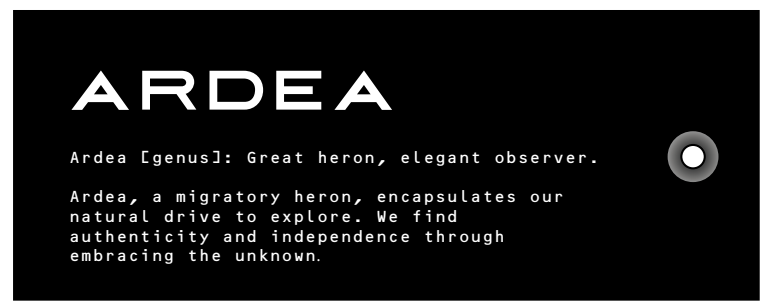
BLACK Uncoated Paper



MATCH CORD TO REFERENCE

DESIGN

FRONT



BACK



PANTONE #000000 BLACK

WASH HANG TAGS

CARDBOARD BRAND TAG

3.875 in

1 in



1mm DEPTH

TAG STYLE

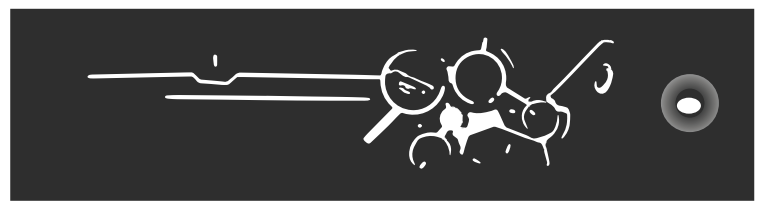
GREY Uncoated Paper



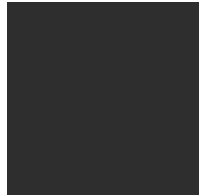
MATCH CORD TO REFERENCE

DESIGN

FRONT

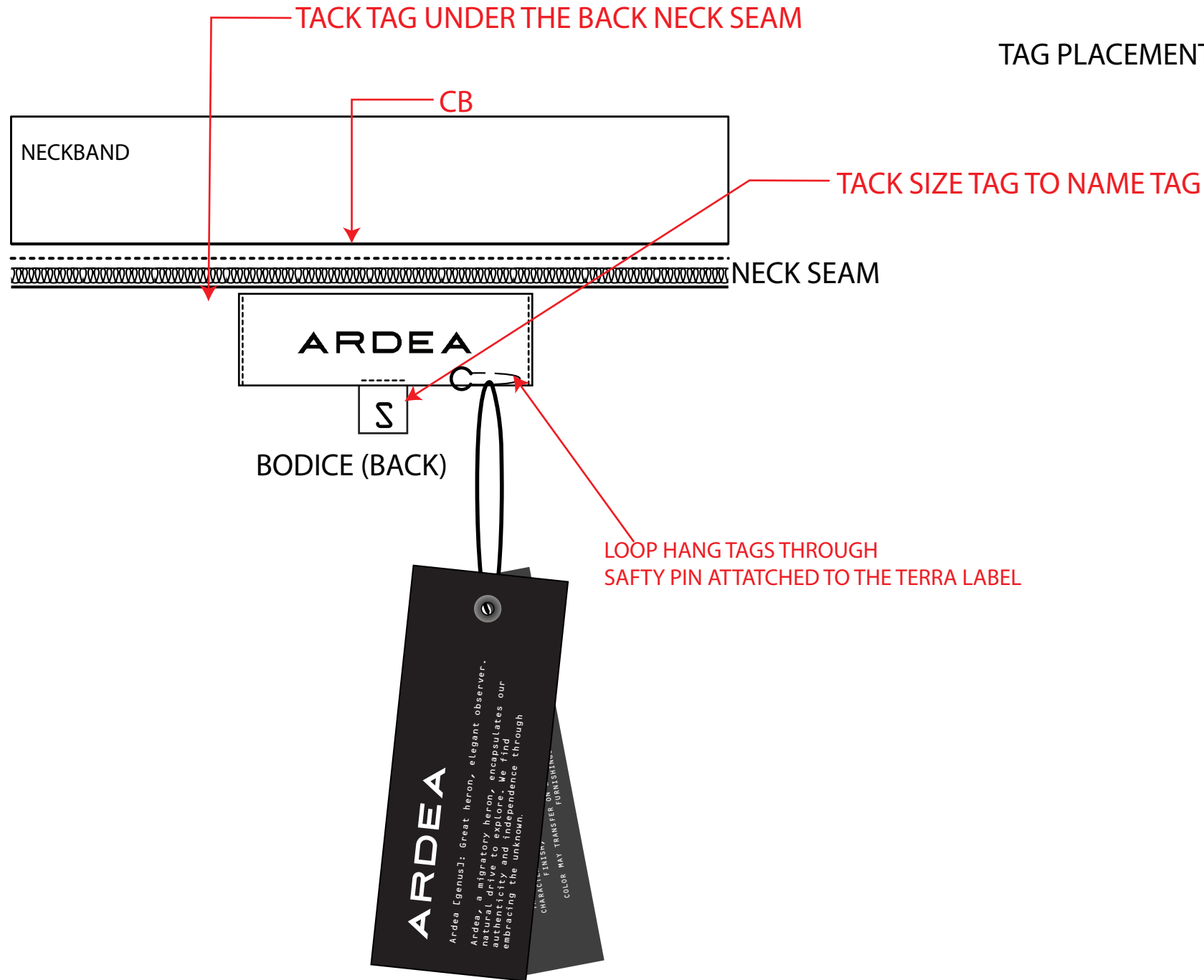


BACK

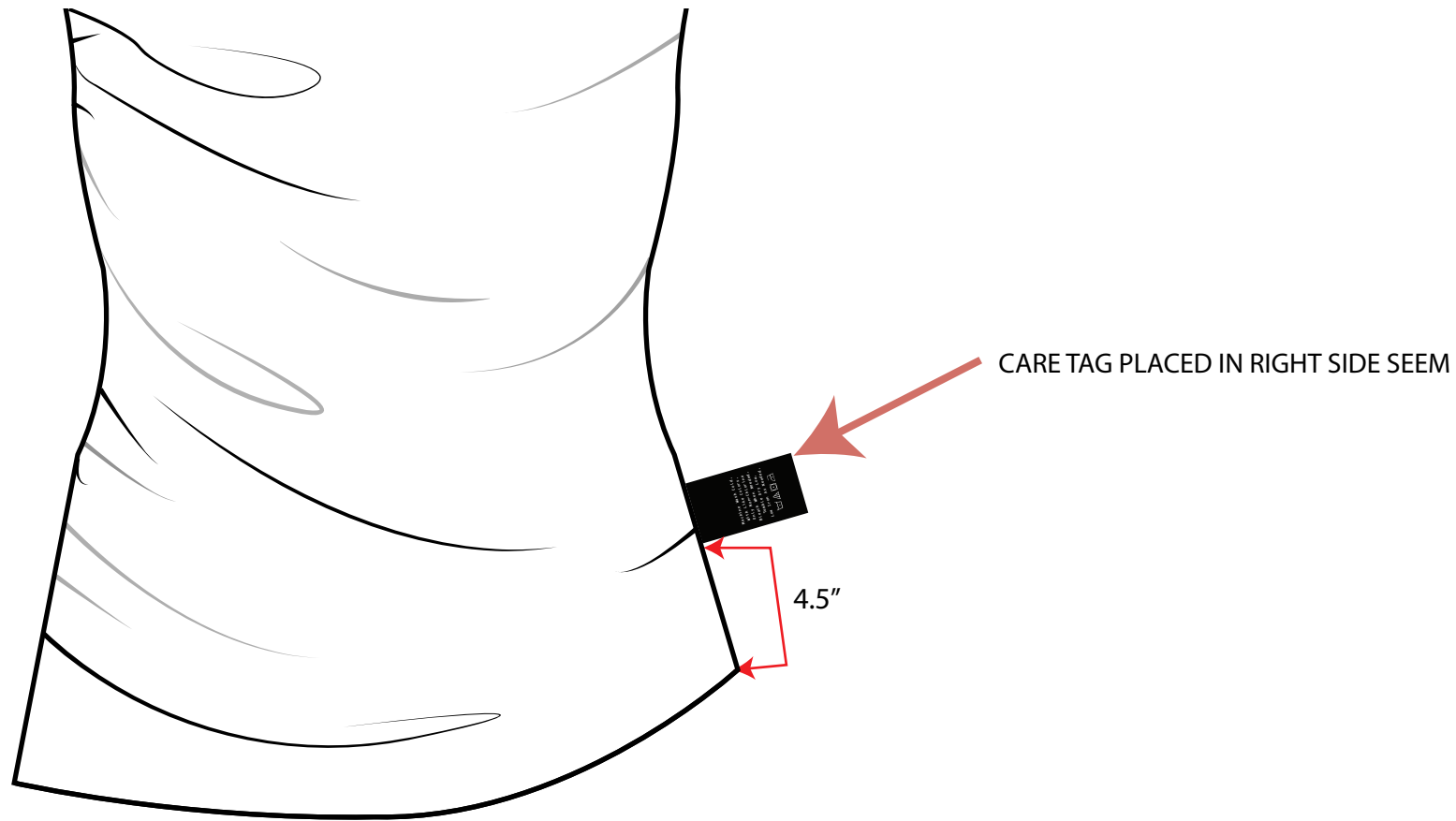


PANTONE #3F4444 "446 C"

TAG PLACEMENT

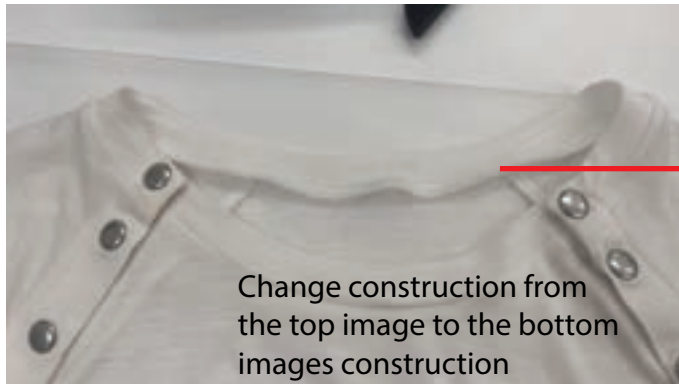


SEWING



SAMPLE CORRECTIONS

change neckband and sleeve hems to cut on crosscut



Correct button spacing to be equal distance from each other

